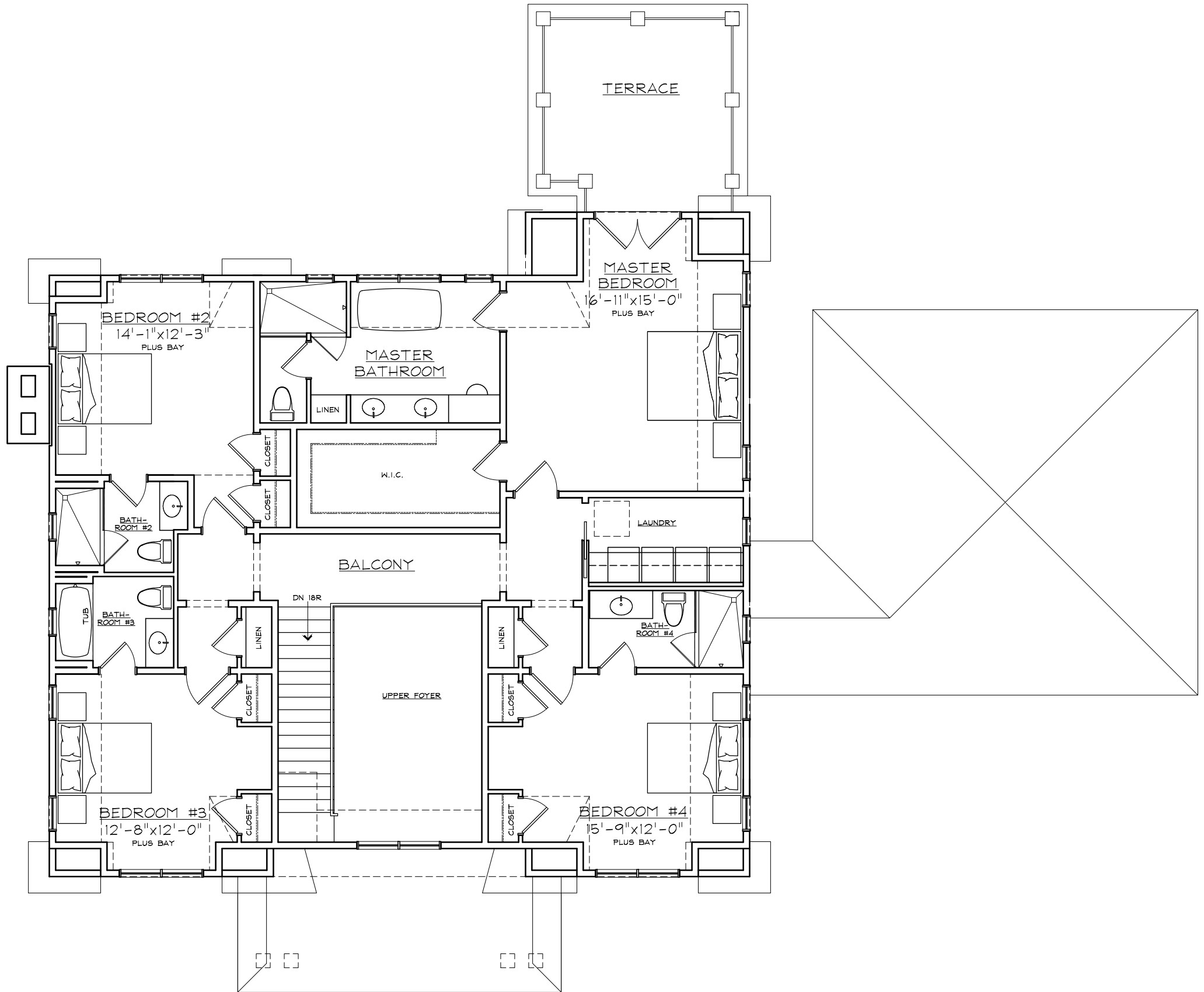


FIRST FLOOR PLAN (8-18-14)

112 MIANKOMA LANE

2,218 SQ. FT.  
TOTAL 4,087 SQ. FT.

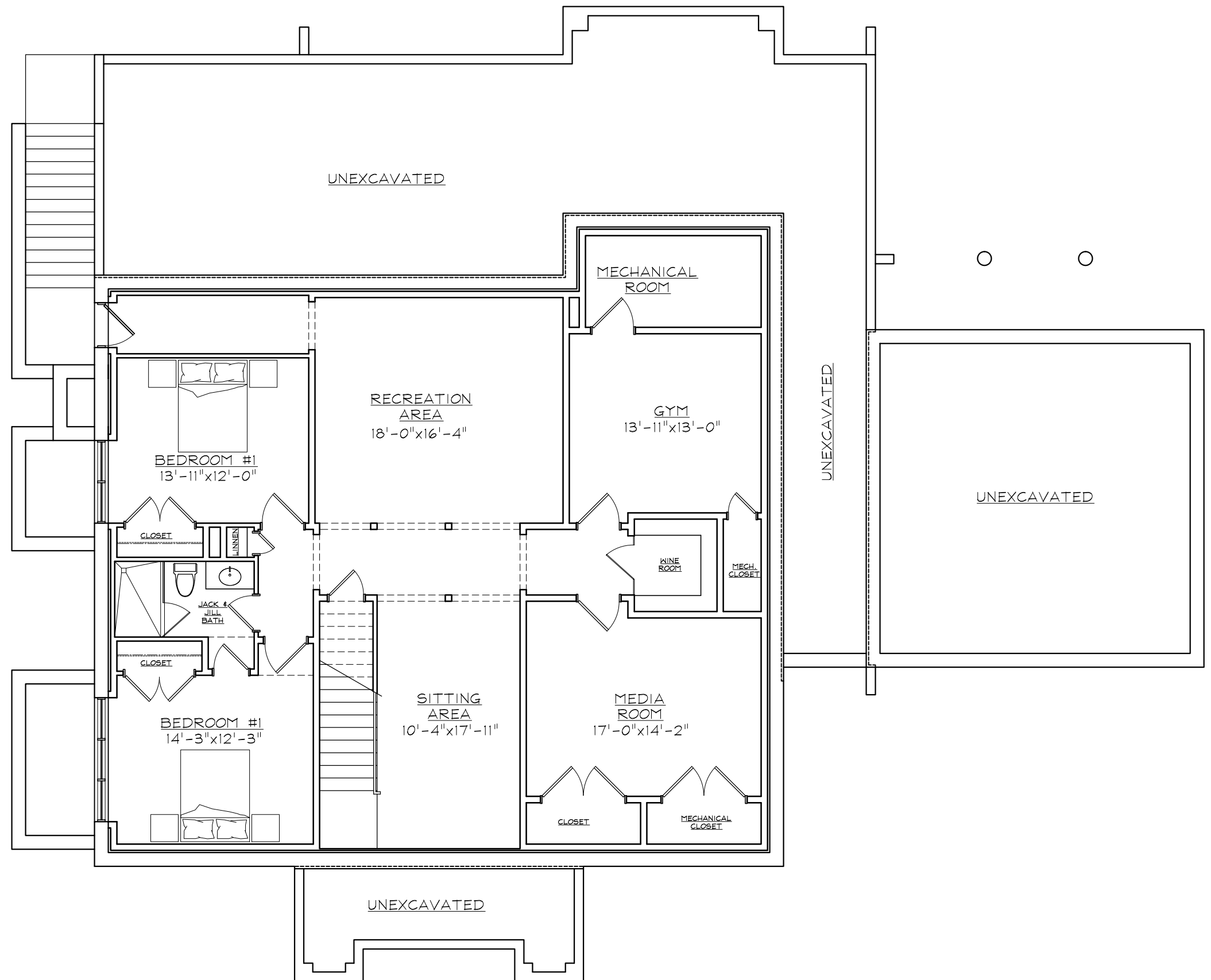


SECOND FLOOR PLAN (8-18-14)

112 MIANKOMA LANE

1,869 SQ. FT.

FARRELL BUILDING CO.



BASEMENT PLAN  
 112 MIANKOMA LANE 1,899 SQ. FT.