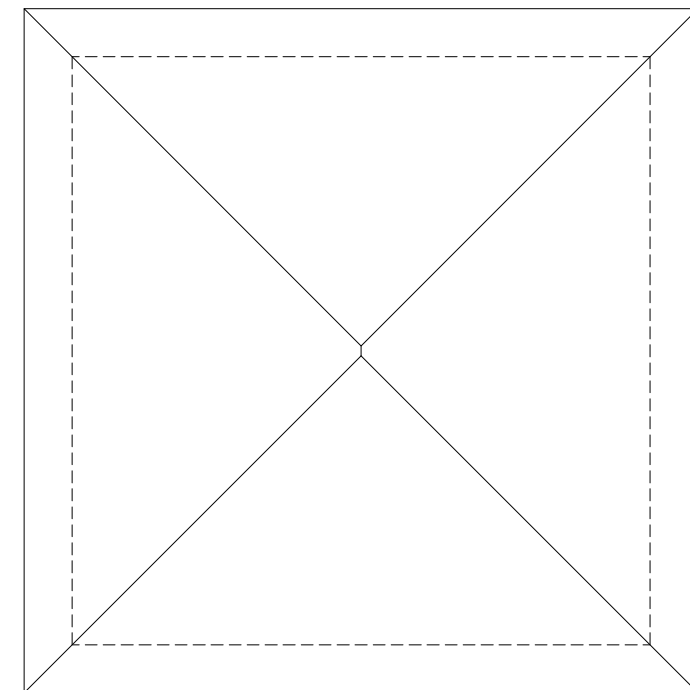
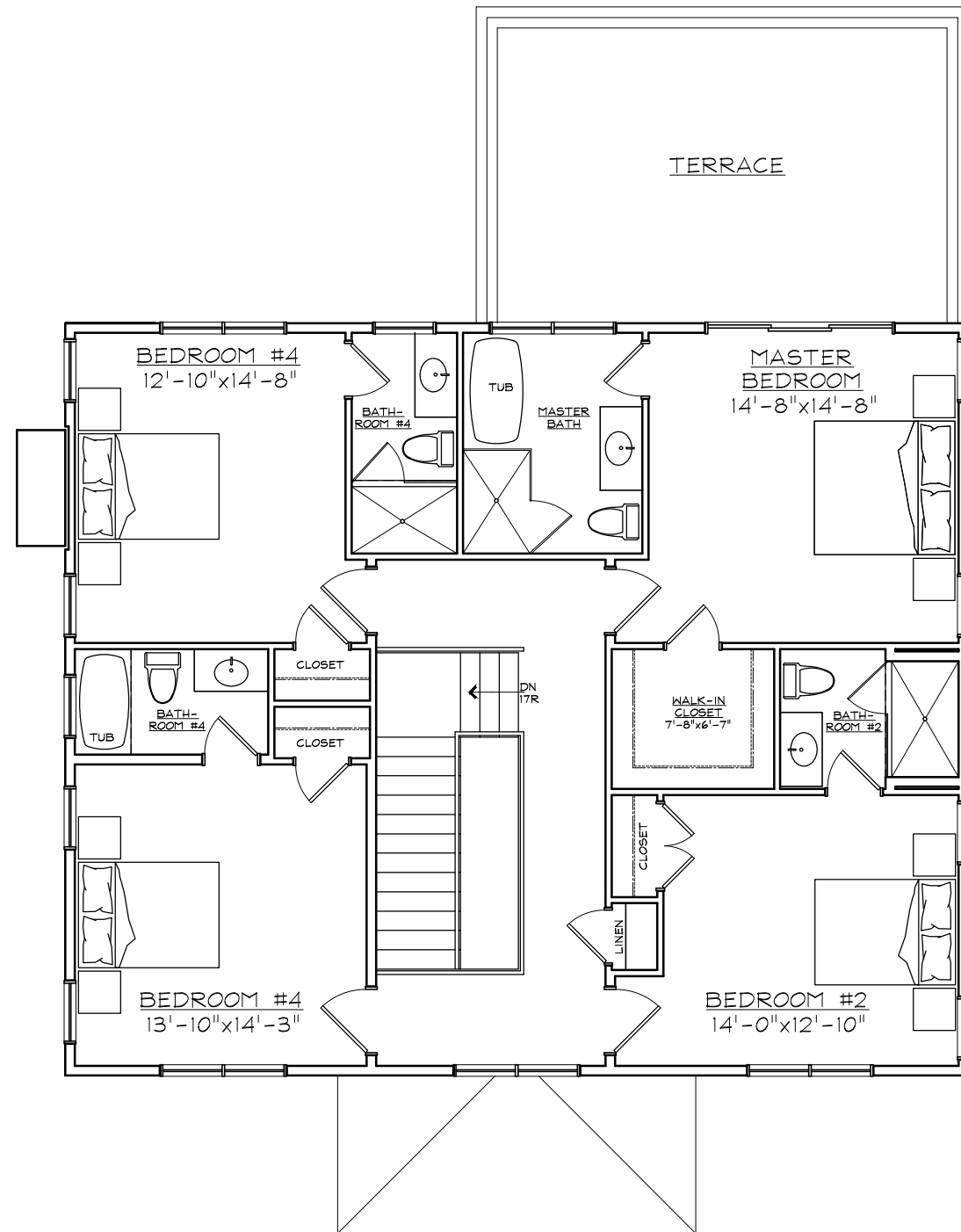


FIRST FLOOR PLAN (7-14-15)

204 COVE HOLLOW ROAD

1,528 SQ. FT.
TOTAL 3,056 SQ. FT.

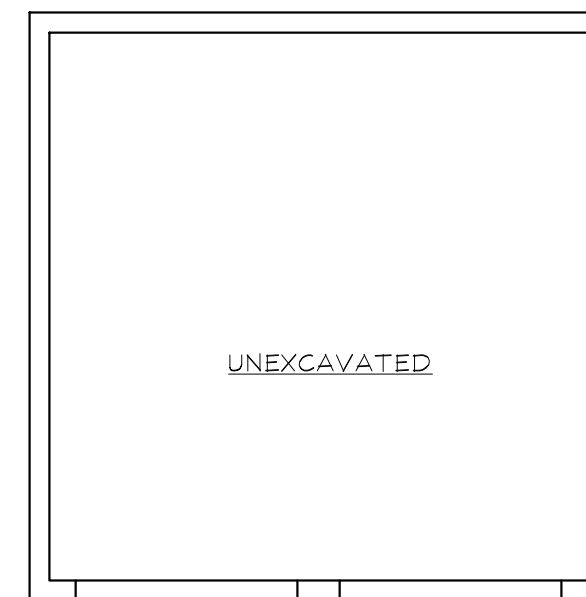
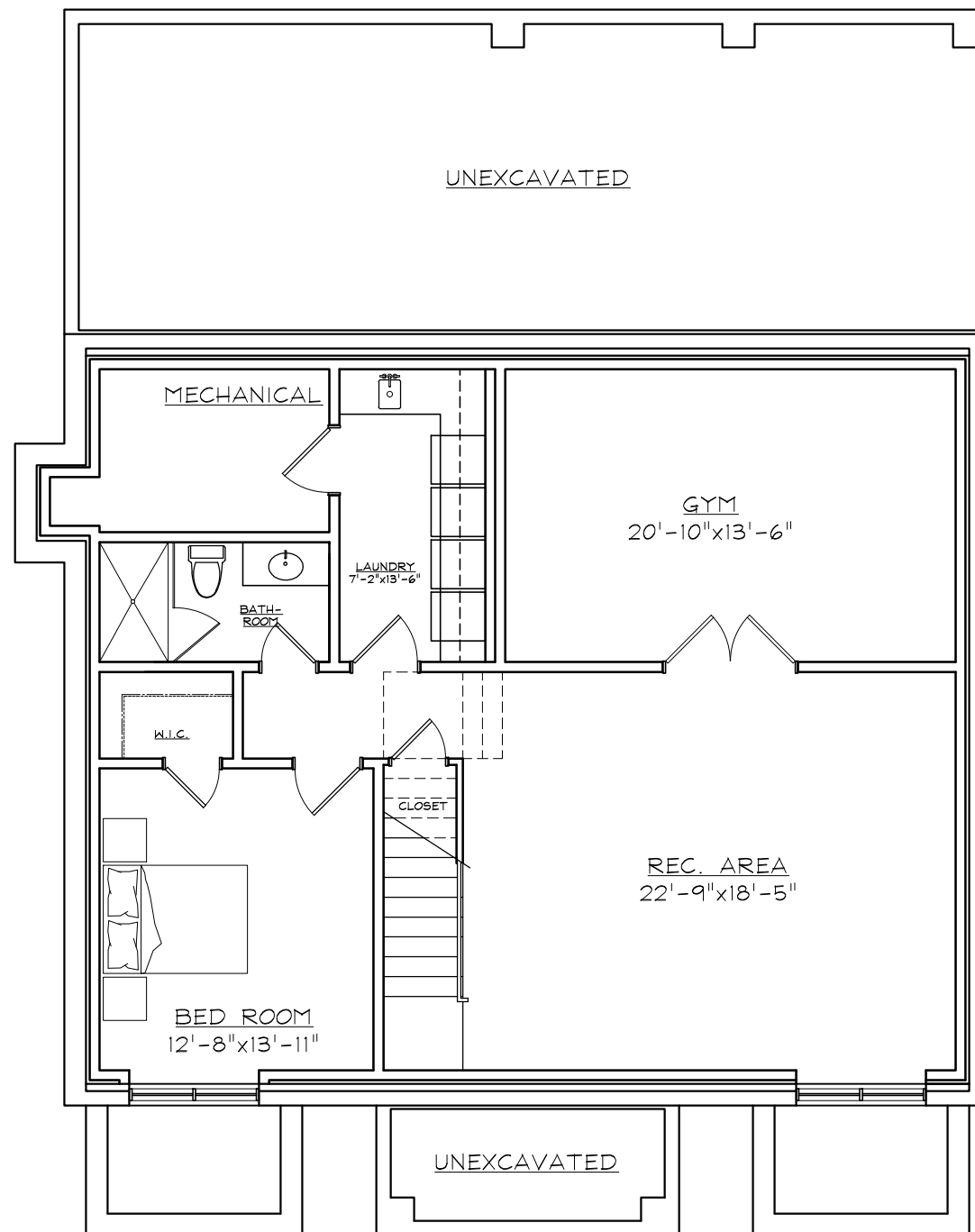


SECOND FLOOR PLAN (7-14-15)

204 COVE HOLLOW ROAD

1,528 SQ. FT.

FARRELL BUILDING CO.



BASEMENT PLAN (7-14-15)
204 COVE HOLLOW ROAD

1,261 SQ. FT.

FARRELL BUILDING CO.