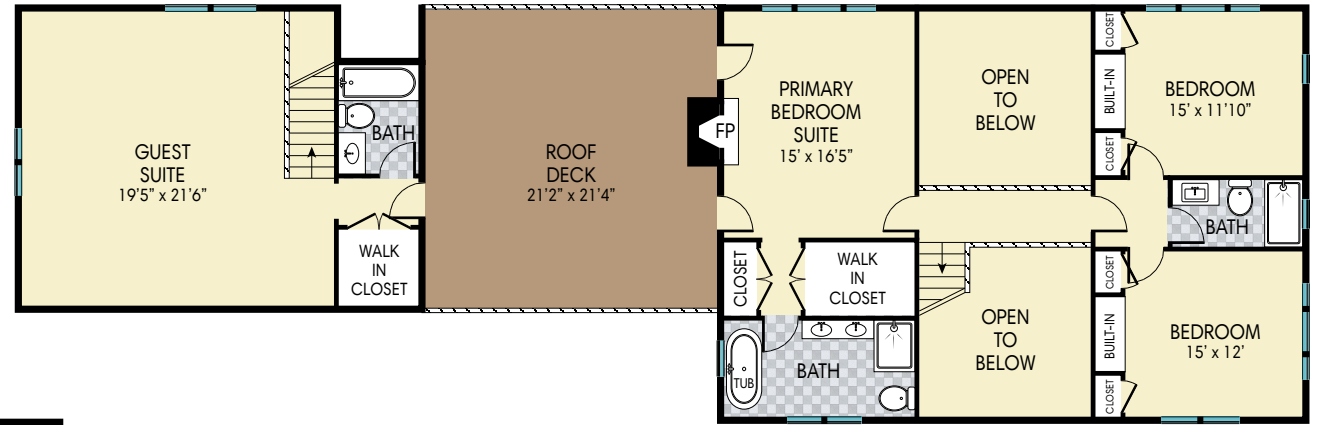
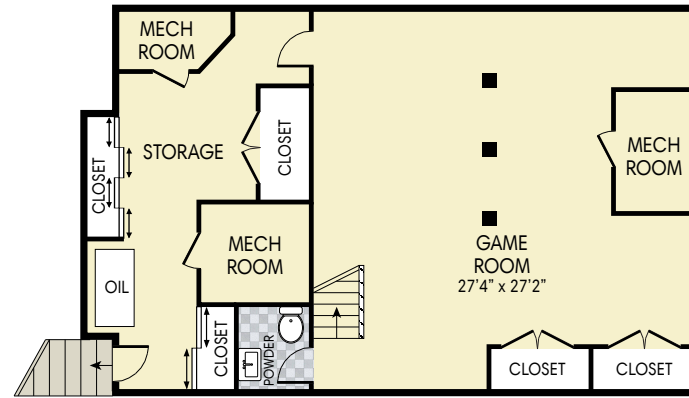


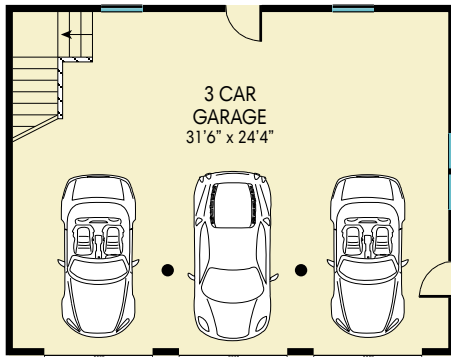
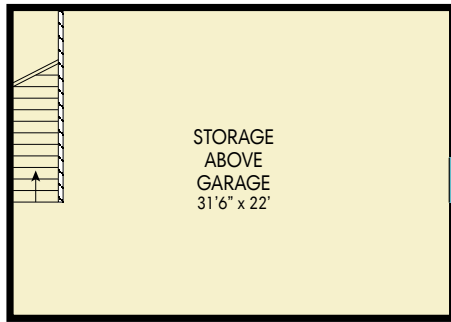
POOL HOUSE



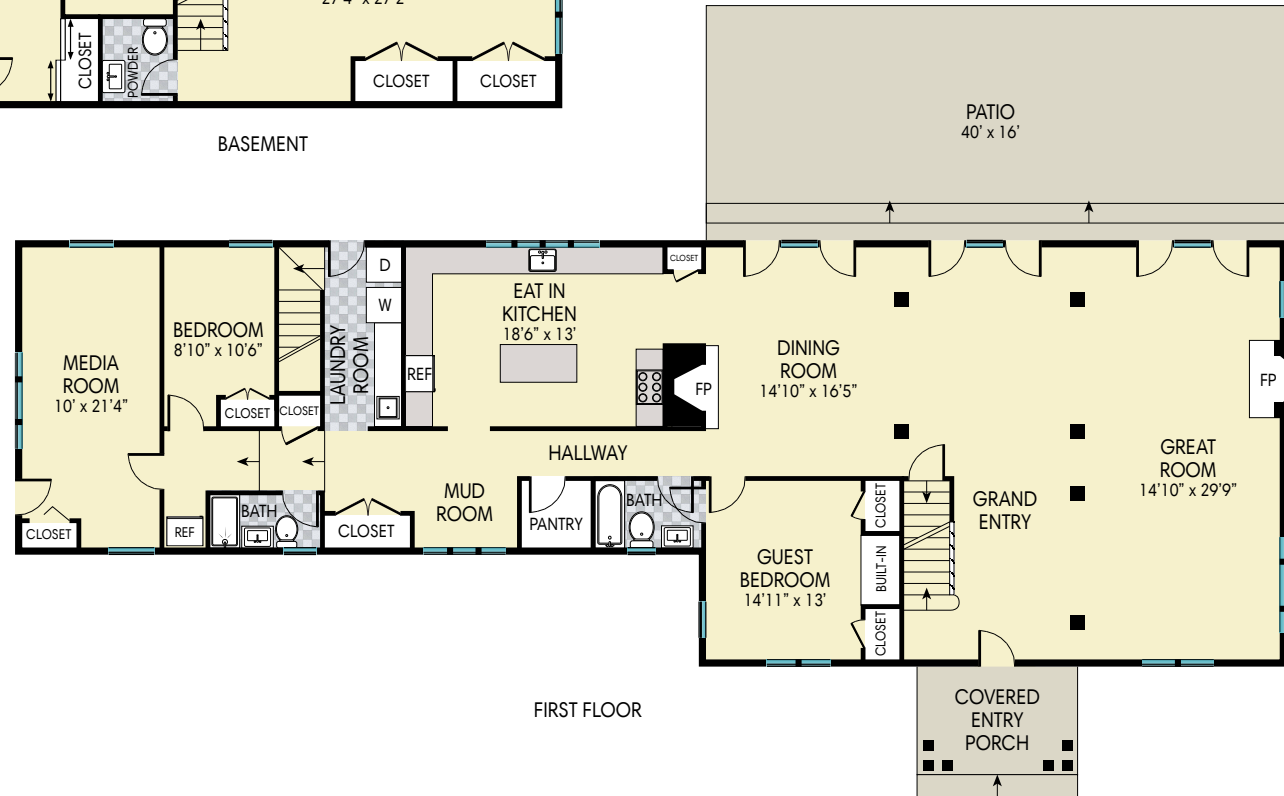
SECOND FLOOR



BASEMENT



GARAGE



FIRST FLOOR

BASEMENT: 1216 FT<sup>2</sup>  
 FIRST FLOOR INT: 2411 FT<sup>2</sup>  
 FIRST FLOOR OUT: 753 FT<sup>2</sup>  
 SECOND FLOOR INT: 1905 FT<sup>2</sup>  
 SECOND FLOOR OUT: 452 FT<sup>2</sup>  
 GARAGE: 775 FT<sup>2</sup>  
 STORAGE: 699 FT<sup>2</sup>  
 POOL HOUSE: 236 FT<sup>2</sup>  
 POOL PATIO: 279 FT<sup>2</sup>  
 POOL: 1000 FT<sup>2</sup>  
 TOTAL INT: 5532 FT<sup>2</sup>  
 TOTAL EXT: 4194 FT<sup>2</sup>  
 TOTAL: 9726 FT<sup>2</sup>



Plans shown are for presentation purposes only and are not part of any legal document or title. They subject to errors, omissions, inaccuracies and should not be used as a sole and accurate reference. Interested parties should make their own inquiries using independent sources.

639 Butter Lane, Bridgehampton