

## STILL SELLING STRONG IN THE HAMPTONS... A SELECTION OF TRANSACTIONS SINCE LABOR DAY

IN CONTRACT - 11/08



Bridgehampton. \$9.95M WEB# 22445

IN CONTRACT - 11/08



East Hampton. \$11.45M WEB# 52844

IN CONTRACT - 9/08



Bridgehampton. \$6.695M WEB# 39981

SOLD - 10/08



Water Mill. \$2.595M WEB# 31741

SOLD - 11/08



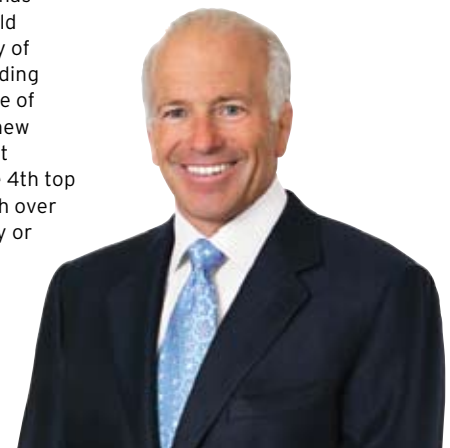
Amagansett. \$3.95M WEB# 53617

\* Prices shown are as last advertised.

### In uncertain times isn't it best to go with a proven leader?

In just over 13 years on the East End with Allan Schneider Associates, now the Corcoran Group, Gary DePersia has participated in nearly a billion dollars of real estate transactions with more than 150 of his exclusive listings sold and closed, as well as matching hundreds of his own buyers and renters with the right properties. His inventory of sensational exclusive listings from Southampton to Amagansett currently is approaching \$500,000,000 including such standouts as the 55 acre water front oasis Tyndal Point, the sprawling 8 acre Stone Meadow Farm, the site of the 2007 & 2008 Red Cross Ball, the 11 acre idyllic pond front estate Morgan Hill Farm as well as over a dozen new construction projects. Gary DePersia is consistently ranked among the top producers in the Hamptons. But just recently, in November of 2008, the Wall Street Journal, Real Trends and lore magazine recognized Gary as the 4th top ranked broker by sales volume in their annual list of the "TOP 200" of real estate professionals nationwide with over \$202,000,000 worth of transactions for the previous year. Contact Gary today to discuss listing your property or finding your perfect place in the Hamptons.

Gary DePersia, SVP, Associate Broker  
631.899.0215 Cell 516.380.0538  
gdp@corcoran.com corcoran.com/gdepersia



Equal Housing Opportunity. The Corcoran Group is a licensed real estate broker. Owned and operated by NRT LLC.



**M & M CUSTOM HOMES IN EAST HAMPTON SOUTH**

**East Hampton.** In picturesque seclusion on 1.65 acres in the coveted enclave that is Georgica a 7,500 sq. ft., 8 bedroom traditional offers great room, library and family room all warmed by fireplaces as well as living room, dramatic kitchen, dining room, guest and staff suites. Upstairs his and her baths flank the expansive master that is joined by 4 additional ensuite bedrooms. From there, an elevator reaches down to the finished lower level replete with home theater, wine cellar, staff suite and gym. Outside a unique cabana will overlook pool, spa and sunken tennis court. All this behind a gated entry. Exclusive, Price Upon Request F# 99488 / WEB# 41932



**NEW GROUND - COVER PROPERTY**

**Water Mill.** This world class 11,000 sq. ft., 7 bedroom residence poised on 2.3 acres, with expansive views looking over vast stretches of farmland towards the ocean, is nearing completion for one discerning buyer in search of uncompromising quality in a bucolic setting. A superb floor plan includes a great room with fireplace, state of the art kitchen by Bakes & Co., formal dining room with coffered ceilings and a wainscoted and paneled family room with fireplace. A guest master completes the first floor. Upstairs, the master wing with sitting room and private terrace reigns over 3 additional guest suites. An elevator connects all floors to the finished basement offering wine cellar, home theatre, gym, living room with fireplace, a pair of staff quarters and laundry area. Stone walls and lush lawn frame the Gunite pool and spa, pool house, sunken court and a unique golf practice area. Exclusive, Price Upon Request F# 98010 / WEB# 15383

**Gary DePersia, SVP, Associate Broker 516.380.0538**

Equal Housing Opportunity. The Corcoran Group is a licensed real estate broker. Owned and operated by NRT LLC.



# The Hamptons for Buyers... Sellers... Renters... Investors

Amagansett to Southampton...Sagaponack to Sag Harbor

North of the Highway...South of the Highway



**Amagansett. Devon Area Traditional. WEB# 22447**  
7,000 sq. ft., 5 bedroom, 7 bath, finished basement, 2.25 acres.



**East Hampton. Maidstone Area Estate. WEB# 47839**  
10,000 sq. ft., 6 bedroom, tennis, pool house, 2.7 acres.



**East Hampton. Room To Roam. WEB# 54931**  
5,500 sq. ft., 4 bedrooms, 5.5 bath, pool, tennis, 13.5 acres.



**East Hampton. Georgica Carriage House. WEB# 14589**  
3,500 sq. ft., 4 bedrooms, 3.5 baths, pool, 1.4 acres.



**East Hampton. On Georgica Pond. WEB# 49783**  
2,400 sq. ft., 4 bedrooms, 3 bath, pool, direct pond access.



**Wainscott. Classic Beach House. WEB# 44598**  
3,500 sq. ft., 6 bedroom, 4.5 baths, pool, bike to beach.



**Sagaponack. Big, Bold, Beautiful. WEB# 44758**  
12,000 sq. ft., 8 bedrooms, 11.5 baths, finished basement.



**Bridgehampton. Timeless South of the Highway. WEB# 54711**  
7,000 sq. ft., 8 bedrooms, 8 baths, room for tennis, 3.7 acres.



**Bridgehampton. Horse Country. WEB# 00806**  
5.5 acres, room for substantial house, pool and court.



**Bridgehampton. Morgan Hill Farm. WEB# 47191**  
12,000 sq. ft., 800 ft. pondfront, 11.5 acres, south of highway.



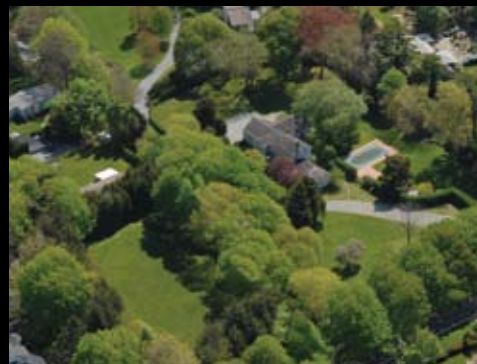
**Water Mill. Mecox Area Estate. WEB# 52422**  
7,100 sq. ft., 9 bedrooms, 9.5 bath, pool, tennis, 1.4 acres.



**Water Mill. Cobb Road Compound. WEB# 34350**  
11,000 sq. ft., 7 bedrooms, guest house, tennis, 2 acres.



**Water Mill. Reserved For You. WEB# 53422**  
6,800 sq. ft., 10 bedroom, finished basement, tennis, 1.5 acres.



**Water Mill. Classic South of Highway Compound. WEB# 31620**  
7,800 sq. ft., guest house, pool, room for tennis, 2.6 acres



**Southampton. Captain's Neck Lane. WEB# 49746**  
8,000 sq. ft., 6 bedroom, finished basement, pool, pool house.



**Sag Harbor. Waterfront Community. WEB# 49488**  
3,800 sq. ft., 4 bedrooms, 5 baths, pool, deeded beach access.



**North Haven. Tyndal Point. WEB# 52126**  
55 acre, 3,000 ft. waterfront, 3 residences, deep water docks.



**North Haven. Waterfront Compound. WEB# 11323**  
House, pool, pool house on 1.5 acres. Contiguous 2.3 acre lot.

Exceptional Properties.....Exceptional Results

Gary DePersia, SVP Associate Broker, 516.380.0538





**PONDVIEW LANE**

**East Hampton.** The double height great room sets the dramatic tone continued throughout this 5,000 sq ft residence including the incredible kitchen with adjacent family room, formal dining room, 1st floor master with adjoining den/sitting room and a breezeway leading to the 3 car garage. Upstairs the master bedroom with fireplace reigns over 3 additional ensuite bedrooms. The 3,000 sq. ft. finished basement offers staff quarters, screening room, gym, sauna and steam rooms, recreation room and wine grotto. Outside the gunite pool and pool house are surrounded by specimen plantings. Available Co-Exclusively for Sale: \$7.95M And for rent MD-LD: \$295K F# 47303 / WEB# 47769



**HEDGE ROW LANE: EAST HAMPTON VILLAGE FRINGE**

**East Hampton.** Privacy, open space, location and potential converge in a rare in-town setting as a long driveway through its own meadow leads to a 4 bedroom residence on an extremely rare 4 acre parcel. Fireplaces warm both the living room and the family room adjoining the sunny eat in kitchen. Masters on either side of the house ensure privacy while 2 additional bedrooms share a bath. Enjoy southern views beyond the heated pool and lawn to your own 3 acre meadow upon which a horse could roam, a family could frolic or where all those would be Tiger Woods could fine tune their games. Plans are available for a major renovation and expansion enlarging the house and connecting it to the existing 2 story detached garage. Available Exclusively for sale, Price Upon Request and for rent MD-LD: \$60K, Y/R: \$95K F# 94294 / WEB# 29323

**Gary DePersia, SVP, Associate Broker 516.380.0538**



# STONE MEADOW FARM

• EAST HAMPTON • NEW YORK •

Years in development, "Stone Meadow Farm" is now complete. This sensational estate, designed and executed by Haddonfield Development, sprawling across 8 open acres, evinces a passion and pride found in its meticulous detail and craftsmanship. Generous rooms and a wonderful flow span 18,000 sq. ft. of living space in the 10 bedroom main house including a 5,500 sq. ft. finished lower level with unique spa and media room. The 2,000 sq. ft. Rose Cottage and the pool side Bungalow Cottage with gourmet kitchen will welcome special weekend guests or staff. Stone courtyards, expansive patios and generous lawn surround the heated Gunite pool and tennis court. Finally, stable up to five horses in an attractive barn framed by ample riding fields. All this only minutes to village shops and ocean beaches.

Price Available Upon Request

Gary DePersia  
516.380.0538 gdp@corcoran.com