

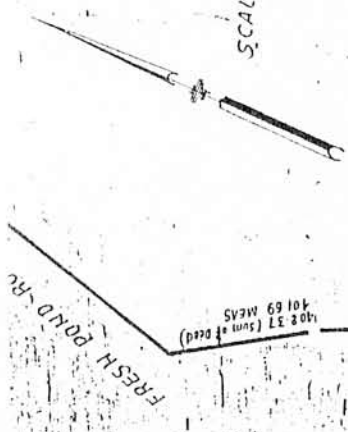
**SURVEY OF PROPERTY**  
 THE INCORPORATED VILLAGE  
**OF NORTH HAVEN**

SUFFOLK COUNTY  
 NEW YORK

FORMERLY LENA M. COOK

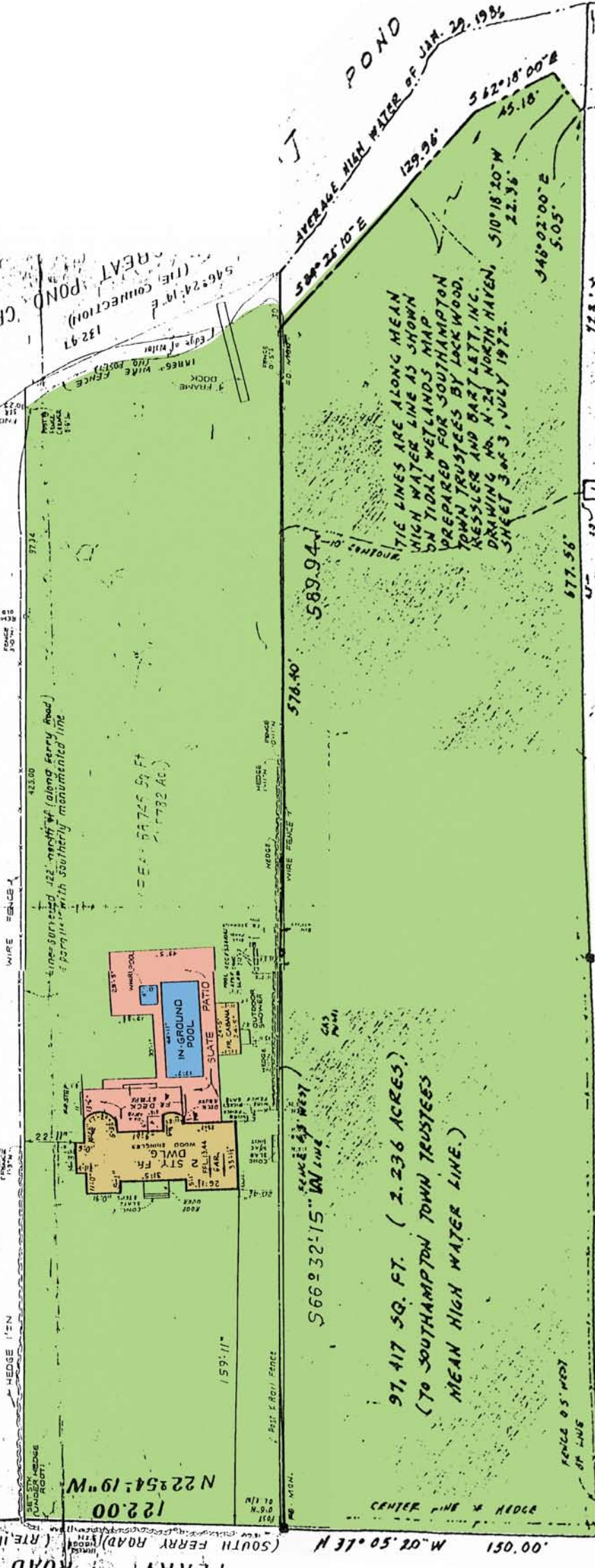
Surveyed by  
**SMITH & JUNG**  
 Professional Land Surveyor  
 120 MEDFORD AVE  
 PATCHOGUE, N.Y.  
 Phone: 475-5192

SCALE: 1"=30'



N 66° 32' 15" E

537.12



91,417 SQ. FT. (2.236 ACRES)  
 (TO SOUTHAMPTON TOWN TRUSTEES  
 MEAN HIGH WATER LINE.)

PRIVATE ROAD

FOR MERLY: NESTA M. REMKUS