

# Gateway To Southampton

67 Lee Avenue, Southampton



Gary DePersia, SVP, Associate Broker

516.380.0538 | [gdp@corcoran.com](mailto:gdp@corcoran.com) | [myhamptonhomes.com](http://myhamptonhomes.com)

*corcoran*  
corcoran group real estate

## Property Details / Amenities / Features

- Built in 2005
- South of the Highway
- Traditional/Gambrel
- 5,000 SF+/-
- 2 Stories
- 1 Acre
- 4 Bedrooms
- 5 Full / 1 Half Bathrooms
- 4 Fireplaces
- Cedar Shingle Exterior
- Tile and Oak Flooring
- Gas Hot Air (7+/- Zone, Street)
- Central Air Conditioning
- 15+/- Zone Irrigation System
- Pre-Wired for CAT5/Audio/Video
- Alarm Installed
- 20'x40' Heated Gunite Pool
- Full Basement
- 2-Car Heated Garage
- Private Driveway

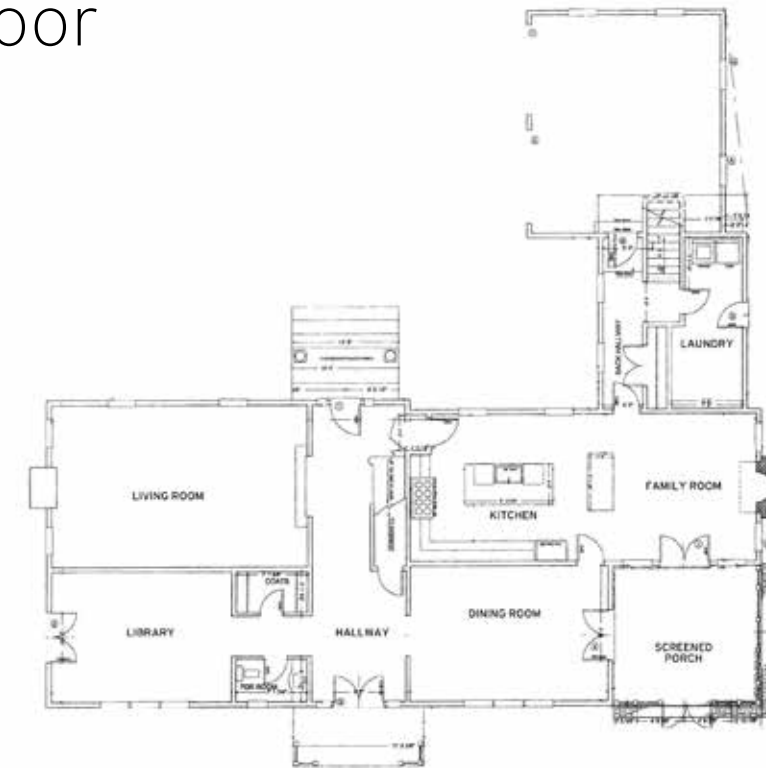
### First Floor

- Paneled Entry Foyer
- Formal Living Room w/ Fireplace
- Powder Room
- Coat Closet
- Office
- Formal Dining Room
- Screened Porch
- Mud Room with Coat Closet
- Laundry Room
- 2-Car Garage
- Gourmet Eat-In Kitchen with:
  - Great/Family Room
  - Fireplace
  - Sharp Convection Microwave
  - Sub Zero Refrigerator
  - Viking Gas Range
  - (2) Ovens
  - Farm Sink
  - Bosch Dishwasher

### Second Floor

- Gym/ Studio above Garage
- Master Bedroom Suite with:
  - Sitting Area
  - Firepalce
  - His/Hers Bathrooms
  - Deep Soaking Tub
  - Large Steam Shower
- (3) Additional Guest Suites

## First Floor



Den

### GATEWAY TO SOUTHAMPTON ESTATE SECTION

**Southampton.** First Neck, Ox Pasture, Great Plains, Halsey Neck. Among the legendary byways of Southampton's estate section, Lee Avenue, often considered the gateway to these coveted streets, has a new offering to join the area elite. A 4+ bedroom classic Gambel design offers a combination of masterful construction, consummate detail and an intelligent floor plan that envelops 5,000 SF+/- on 2 levels of living space. Beautiful stone floors welcome all into a gracious paneled entry that includes living room with fireplace, custom kitchen with gathering room, dining room, den and screened porch. Upstairs the master with fireplace and his/her baths and closets are joined by 3 additional guest suites. The finished room above the garage is perfect for a gym or playroom and can be converted into another bedroom and bathroom. Outside mature landscaping screens the one acre property from neighbors and embraces the heated Gunite pool, stone patios and verdant lawn.

Exclusive WEB# 38544

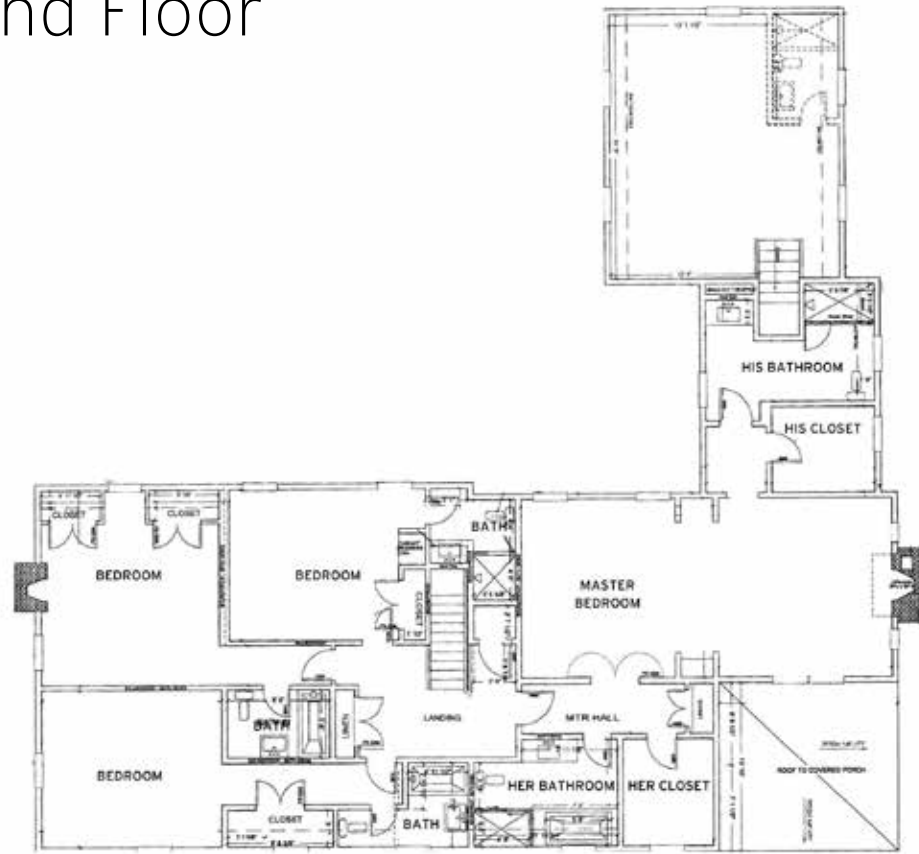


Rear Exterior



Pool View

# Second Floor



Formal Living Room



Kitchen



Family Room off Kitchen



Formal Dining Room



Master Bedroom



Screened Porch



**Joseph A. Ingegnò**  
**Land Surveyor**

THE SURVEYOR - Subordinate - Site Plan - Construction Detail  
 REG. NO. 1841722-2095      Exp. 12/31/2027  
 PHOTO LOGGED at      MILEAGE ADJUSTED  
 12 KIMBERLY AVENUE      7.02 Miles 1873  
 PO BOX 1046      11981      11981  
 Southampton, New York 11968-1046

REMARKS IN ACCORDANCE WITH THE GENERAL STATUTES FOR THE SURVEYOR AS ENACTED BY THE LEGISLATURE AND APPROVED BY THE COMMISSIONERS OF THE STATE OF NEW YORK: THIS SURVEY WAS MADE IN ACCORDANCE WITH THE GENERAL STATUTES FOR THE SURVEYOR AS ENACTED BY THE LEGISLATURE AND APPROVED BY THE COMMISSIONERS OF THE STATE OF NEW YORK.

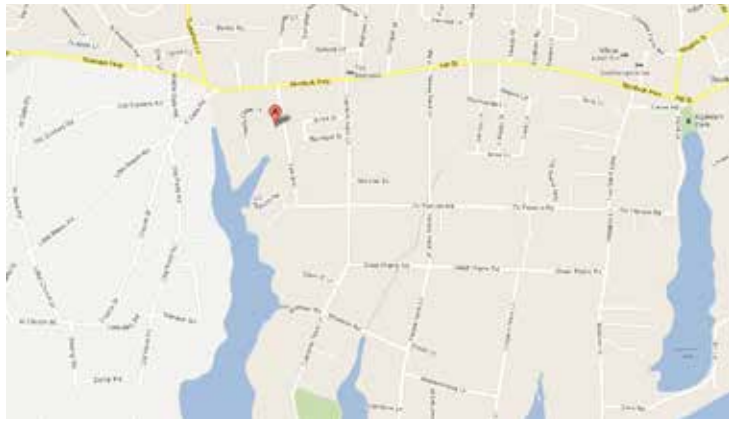
UNLESS OTHERWISE SPECIFIED BY THE SURVEYOR, THIS SURVEY WAS MADE IN ACCORDANCE WITH THE GENERAL STATUTES FOR THE SURVEYOR AS ENACTED BY THE LEGISLATURE AND APPROVED BY THE COMMISSIONERS OF THE STATE OF NEW YORK.

THE DISTINCTION OF RIGHTS OF WAY AND/OR EASEMENTS OF RECORD, IF ANY, HAS BEEN MADE AND IS NOT SHOWN AS NOT SHOWN.



**\$5.15M**

67 Lee Avenue  
 Southampton  
 1 acre / 5,000 SF+/-  
 4 bedrooms / 5.5 bathrooms  
 Tax Map: 0904-011.00-01.00-034.000  
 Yearly Taxes: \$13,525  
 For more pictures, video and info visit:  
[myhamptonhomes.com/38544](http://myhamptonhomes.com/38544)  
 Corcoran WEB# 38544



Gary DePersia, SVP, Associate Broker  
 516.380.0538 | [gdp@corcoran.com](mailto:gdp@corcoran.com) | [myhamptonhomes.com](http://myhamptonhomes.com)

*corcoran*  
 corcoran group real estate