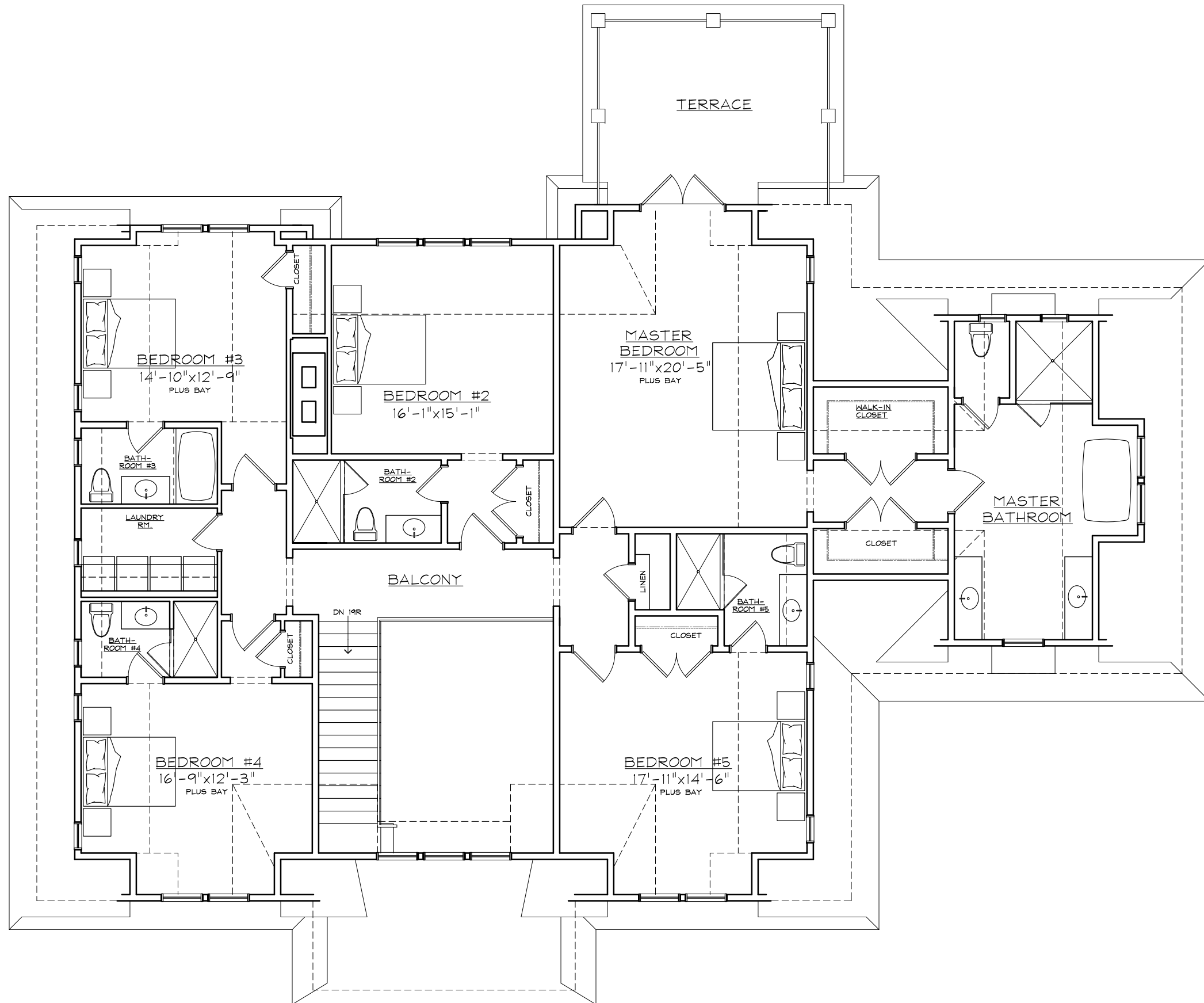


FIRST FLOOR PLAN (2-17-14)

483 HILL STREET

2,886 SQ. FT.
TOTAL 5,531 SQ. FT.

FARRELL BUILDING CO.

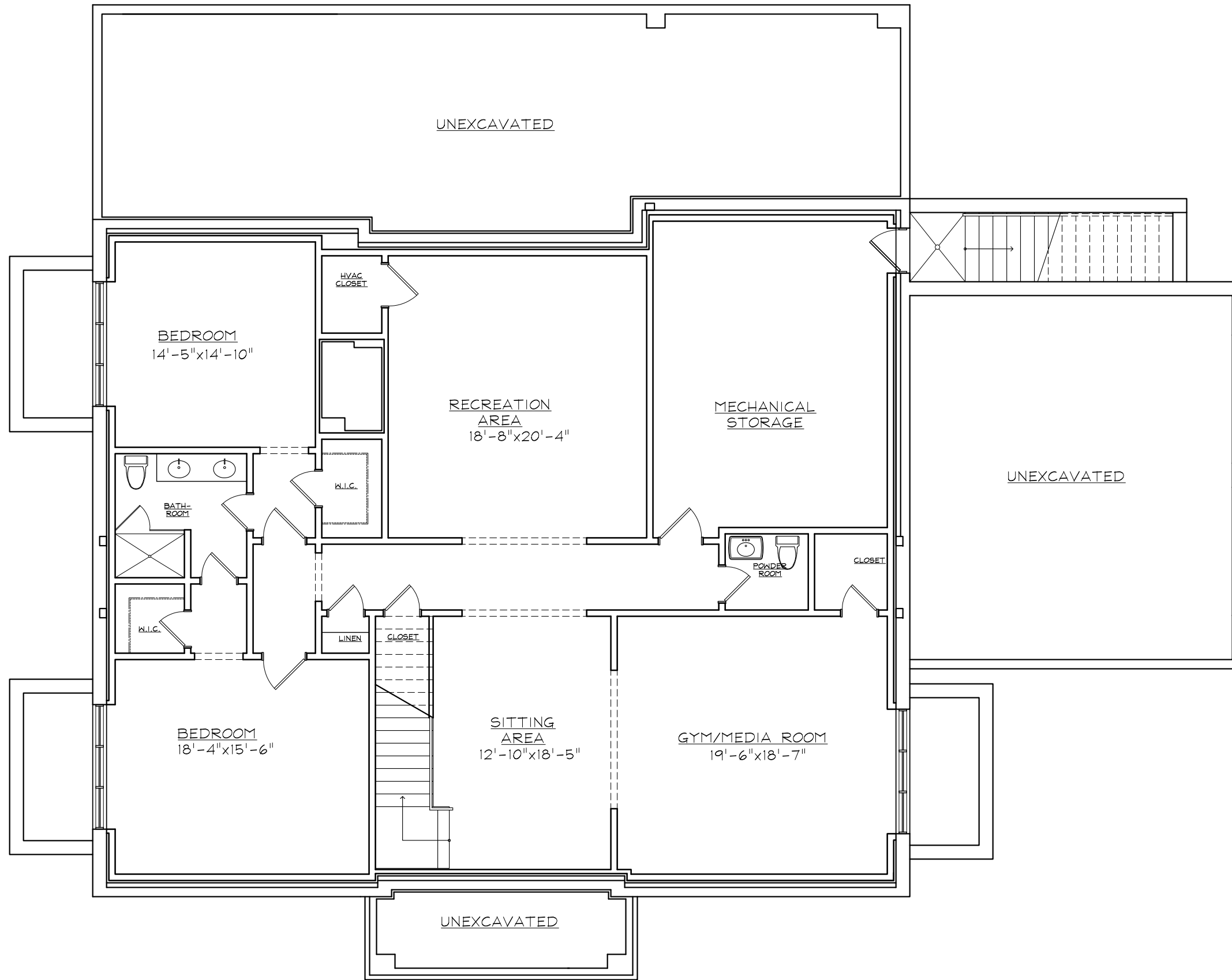


SECOND FLOOR PLAN (2-17-14)

483 HILL STREET

2,645 SQ. FT.

FARRELL BUILDING CO.



BASEMENT PLAN (1-09-14)

483 HILL STREET

2,240 SQ. FT.

FARRELL BUILDING CO.