

Southampton Coastal Luxury
Awaits on 5 +/- Acres
for Summer 2024
1710 Meadow Lane, Southampton



Gary DePersia

Licensed Associate Real Estate Broker

m: 516.380.0538 | gdp@corcoran.com | myhamptonhomes.com

corcoran

corcoran group real estate



SOUTHAMPTON COASTAL LUXURY AWAITS ON 5 +/- ACRES FOR SUMMER 2024

Southampton. Welcome to this palatial seaside Southampton estate available for Summer 2024 rental. Designed by the East Ends own renowned Francis Fleetwood, with renovations in 2010 by award-winning architect Jacquelin T. Robertson, this 10,000+ sf residence is a testament to architectural brilliance and coastal opulence. Situated on a lush, nearly 5-acre parcel, framed by the Atlantic to the south with 250 ft. of direct ocean frontage and Shinnecock Bay to the north offering stunning sunsets, a 8-bedroom, 10-bathroom property exemplifies dreamy Hamptons living and classic beachside luxury. A gated driveway lined with hick privacy hedges and mature trees opens onto a verdant front lawn. The journey begins with an airy foyer and a grand central staircase. The upper level of the home is wrapped in spacious decks and contains an expansive living room under vaulted ceilings and warmed by a large fireplace. The formal ocean side dining room is serviced by an eat-in kitchen with center island, custom cabinets, drawers, and high-end appliances. The primary suite enjoys tranquil views over both ocean and bay augmented by a luxurious bathroom, contiguous den with fireplace and full bath plus a private exercise room. A semi-attached guest wing contains a pair of bedrooms with baths ensuite. Looking over both ocean and bay, a well outfitted gym with spa bath that includes a steam shower completes the second floor. On the main level, four additional guest suites, an expansive media room, wine cellar, and a full staff suite offering kitchen, bedroom, laundry room, and a security room add to the properties allure. Ocean and bay views, sunrises and sunsets are enhanced by copious upstairs decking on both sides of the house ending with a separate roof top ocean view aerie. And because what happens outside in the Hamptons is equally as important as inside, a privileged renter will appreciate the oceanside amenities that include a large heated Gunite pool with cabana both framed by ample covered and uncovered patios for lounging as well as al fresco dining, a firepit, children play areas and a private wooden walkway to the white sands stretching endlessly in each direction. In every corner, at every turn, this Meadow Lane offering stands as an attestation to refined living, where dreams are woven into the fabric of reality, inviting the fortunate few to embark on a journey of unparalleled luxury and coastal enchantment. Contact us today before this opportunity vanishes on the next tide. **WEB# 911436**





PROPERTY DETAILS & AMENITIES

BASIC HOUSE / PROPERTY INFORMATION

- 250' of Oceanfront with Shinnecock Bay Views
- Completed 1988; Renovated 2010
- Traditional
- Cedar Exterior
- Cedar Shake Roof
- 2 Stories
- 4.8 Acres
- 10,200 SF+/-
- 8 Bedrooms
- 10 Full, 3 Half Bathroom
- 3 Fireplaces
- 50' Heated Gunite Pool
- 2 Bedroom Guest Cottage Over Garage w/ Separate Entrance
- Fully Equipped Gym
- Multiple Ocean & Bayview Terraces w/ Rooftop Aerie
- Large Circular Driveway

FIRST FLOOR

- Dramatic Entry Foyer
- Family/Media Room w/ Access to Pool Patio
- 2 Powder Rooms
- 4 Ensuite Guest Bedrooms w/ Radiant Heated Bathroom Floors
- Staff Lounge w/ Kitchen, Full Bedroom & Bathroom
- Laundry Room w/ 2 Sets Washers & Dryers
- Two Car Heated Garage

SECOND FLOOR

- Grand Cathedral Ceiling Living Room w/ Fireplace
- Formal Dining Room
- Gourmet Chefs Kitchen Overlooking Bay with:
 - o Sub-Zero Refrigerator
 - o Two Dishwashers
 - o Two Sinks
 - o Garland 6 Burner Stove & Indoor Grill
 - o Large Center Island w/ Seating
 - o Terrace
- Primary Suite with:
 - o Sleeping Chamber w/ Fireplace
 - o Dual Walk-In Closets
 - o 2 Large Ocean-Facing Balconies
 - o Wet Bar
 - o Study/Sitting Room w/ Fireplace & Full Bath
 - o Primary Bathroom w/
 - o Large Steam Shower
 - o Large Jacuzzi Tub
 - o Dual Sinks
 - o Make-up Vanity
 - o Multiple Closets and Dressing Area

SEMI-ATTACHED GUEST WING

- 2 Guest Bedroom Suites with Separate Entry
- Fully Equipped Gym with Full Bath & Separate Entry

OUTDOOR AMENITIES

- 50' Heated Gunite Pool
- Circular In-Ground Spa
- Cabana
- 2 Awning Covered Outdoor Patio Areas
- Expansive Patios and Multiple Terraces
- Fire Pit
- Multiple Children Playing Areas

MECHANICAL / TECHNICAL ASPECTS

- 10+ Zone Central Air HVAC
- Propane Heat
- Irrigation System
- Central Vacuum
- Sound System Throughout
- Full House Generator

CREATIVE

- Designed by Francis Fleetwood
- Renovation by Jacquelin T. Robertson







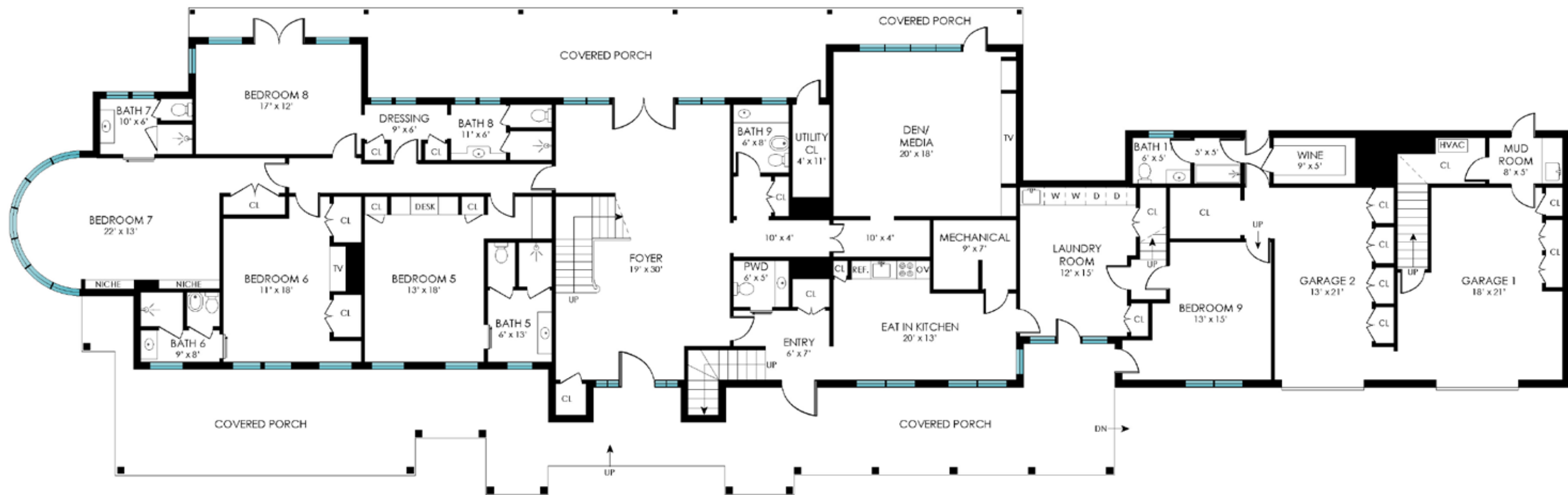


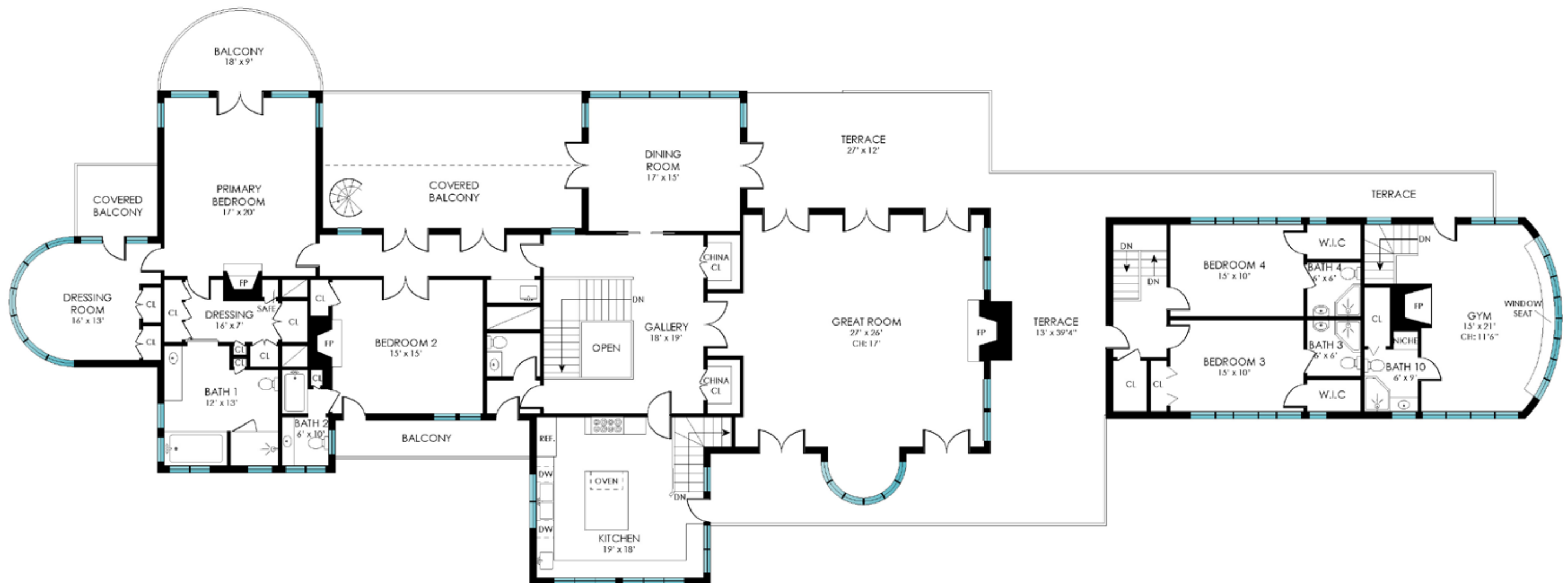


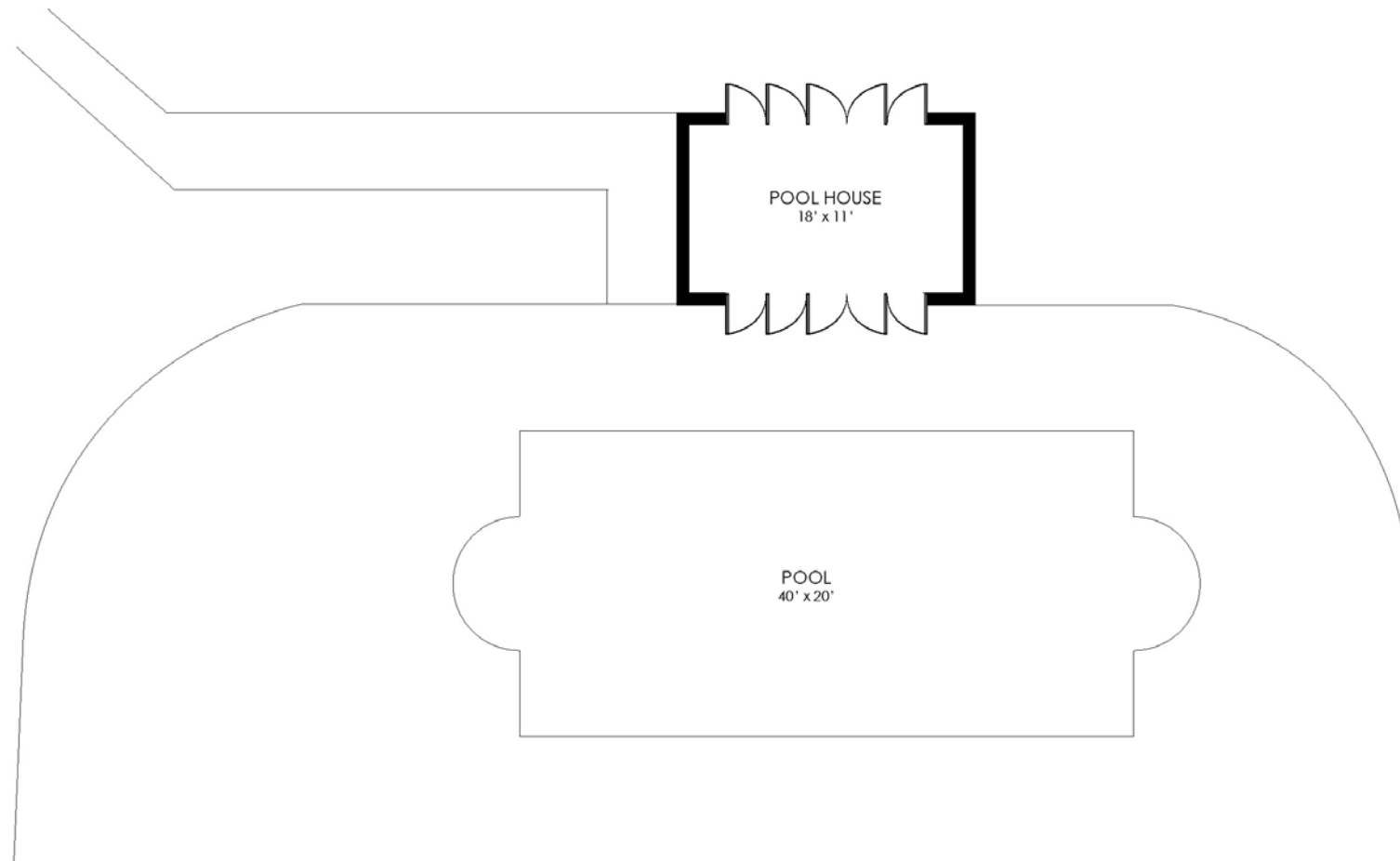














1710 Meadow Lane,
Southampton

4.80 acres / 10,200 SF+/-

8 bedrooms / 10 full bathrooms / 3 half bathrooms

Tax Map:0904-021.000-01-000.008/020

Taxes: \$134,432 / Year

For more pictures, video and info visit:

myhamptonhomes.com/911436

Corcoran WEB# 911436

Gary R. DePersia

Licensed Associate Real Estate Broker

m: 516.380.0538 | gdp@corcoran.com | myhamptonhomes.com