

Dramatic New Farrell Companies 8,600 SF+/-, 8 Bedroom Oceanfront

165 Surfside Drive, Bridgehampton



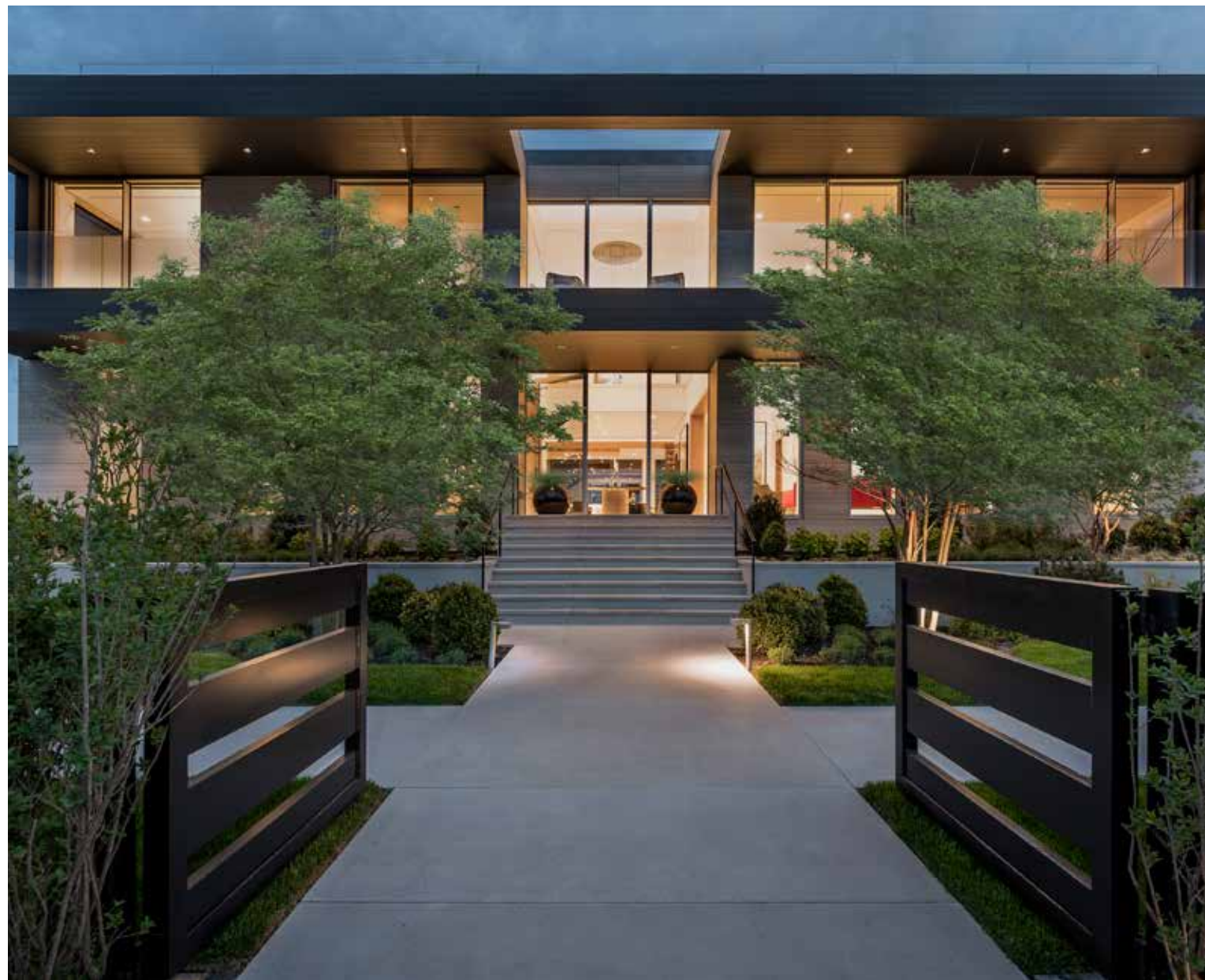
Gary DePersia

Licensed Associate Real Estate Broker

m: 516.380.0538 | gdp@corcoran.com | myhamptonhomes.com

corcoran

corcoran group real estate



DRAMATIC NEW FARRELL COMPANIES 8600 SF, 8 BEDROOM OCEANFRONT

Bridgehampton. Nestled south of the highway, an unparalleled 1.5-acre haven, graced with 125 feet of direct ocean frontage, offers panoramic vistas of the majestic Atlantic Ocean and pristine white sand beaches. Embark on a journey through time and space, as a magnificent modern estate of grandeur unfolds before your eyes, poised for completion shortly. Behold an architectural marvel spanning 8,600 square feet, boasting 8 opulent bedrooms, 8.5 lavish bathrooms, and a heated 6-car garage, all meticulously designed to redefine luxury living. Step into a realm of opulence as you explore the exterior oasis, featuring a heated Gunite pool and spa, a sprawling rooftop terrace adorned with a putting green and bar, and a private boardwalk leading you to the embrace of the ocean waves. Secured behind the gates of one of Bridgehampton's most coveted streets, 165 Surfside Drive offers a sanctuary of serenity, marrying tranquil oceanfront living with the convenience of nearby Hampton amenities. Crafted by an award-winning ensemble including Farrell Companies, Will Minnear Architect, and Hamptons Yards, this exclusive development promises an unparalleled standard of excellence. Cross the threshold and be greeted by a symphony of light and space, courtesy of Fleetwood floor-to-ceiling glass windows and doors, inviting the outdoors in. The open-concept design seamlessly merges indoor and outdoor living, offering a harmonious sanctuary bathed in natural light. Indulge your culinary senses in the state-of-the-art kitchen, equipped with top-of-the-line appliances, custom Cuiffò cabinetry, and a glass-enclosed wine closet. A secondary chef's kitchen and pantry ensure every culinary desire is met with ease. Retreat to the oceanfront primary wing, where sliding doors beckon you to the poolside terrace, while a spa-like oasis awaits within the primary bath, boasting dual vanities, a glass-enclosed shower, and a sumptuous soaking tub. Ascend the floating staircase to discover a haven of comfort on the second level, where favored guests will enjoy a secondary primary en-suite bedroom, boasting dual walk-in closets, an office, and a lavish bathroom. Six additional bedroom suites, offering respite and rejuvenation, each opening onto a shared terrace with breathtaking ocean views, complete the second floor. Elevate your experience to new heights atop the 4,476 square foot rooftop deck, where a private putting green, spa, and pergola-covered dining area await, offering a vista of endless possibilities against the backdrop of the boundless ocean horizon. Welcome to 165 Surfside Drive, where every moment is a testament to coastal elegance and timeless luxury. **WEB# 911575**





Properties Details / Amenities

Property Information

- Completed 2024
- Modern Ocean Front
- Trespa Panel Exterior Siding
- Mahogany Decking over EPDM Roofing
- 3 Levels Including Roof Deck
- 1.5 Acres +/-
- 8,600 SF +/-
- 8 Bedrooms
- 8 Full, 1 Half Bathrooms
- 1 Fireplace
- Heated Gunite Pool w/ Spa
- 6-Car Attached Garage w/ Heat
- Elevator Serving 3 Floors

First Floor

- Dramatic Entry Gallery Foyer
- Floor to Ceiling Glass Windows and Doors
- Floating Staircase with Glass Railings
- Stone Flooring
- Open Kitchen and Main Living Spaces
- Dining Room
- Media Room
- Powder Room
- Primary Bedroom Suite with:
 - o Dual Walk-In Closets
 - o Terrace
 - o Spa Like Bathroom with:
 - Radiant Heated Floors
 - Shower
 - Soaking Tub
 - Dual Sinks

Kitchen Details

- Large Open Kitchen with Living Room includes:
 - o Marble Counter Tops
 - o 2 Sinks
 - o Large Center Island w/ Seating for 4
 - o Sub Zero Refrigerator
 - o Gas Range w/ 8 Burners, Griddle + 2 Ovens
 - o 2 Miele Dishwashers
 - o Sharp Microwave
 - o Extensive Ciuffo Cabinetry
 - o Sub Zero Cooling Drawers
 - o Butler's Pantry/Chef's Prep Kitchen
 - Sub Zero Refrigerator
 - Miele Dishwasher
 - Farm Sink
 - Large Wine Closet

Second Floor

- White Oak Flooring
- Second Floor Primary Bedroom Suite with:
 - o Dual Walk-In Closets
 - o Terrace
 - o Spa Like Bathroom with:
 - Radiant Heated Floors
 - Shower
 - Soaking Tub
 - Dual Sinks
 - Office
- 6 Additional Bedroom Suite with:
 - o Closet
 - o Full Baths w/ Heated Floors
 - o Morning Wet Bar
- Laundry Room

Outdoor Amenities

- Heated Gunite Pool with Spa
- Rear Covered Outdoor Porch
- Outdoor Terrace with Putting Green
- Open & Covered Patios
- Extensive Terrace Gardens
- 125' Direct Ocean Frontage
- Elevator Service Roof Deck w/ Putting Green & 8'x 8' Spa

Mechanical / Technical Aspects

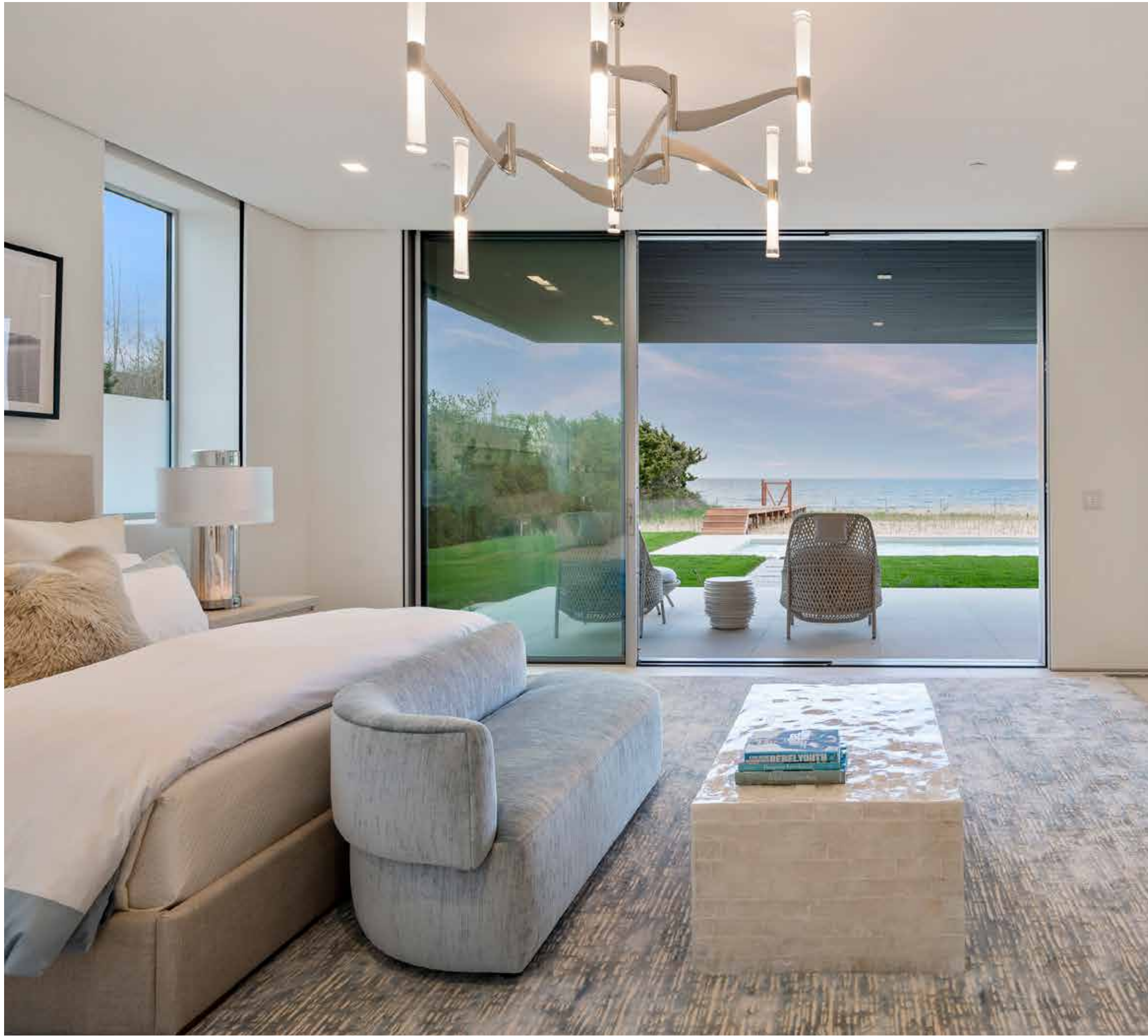
- 8 Zone Geo-Thermal HVAC
- 600 Amp Electrical Service
- Irrigation System
- Alarm System
- Savant Home Automation
- Lutron Lighting
- Central Vacuum
- Sound System Throughout

Creative

- Built by Farrell Companies
- Architecture by Will Minnear
- Landscape Design by Hampton Yards



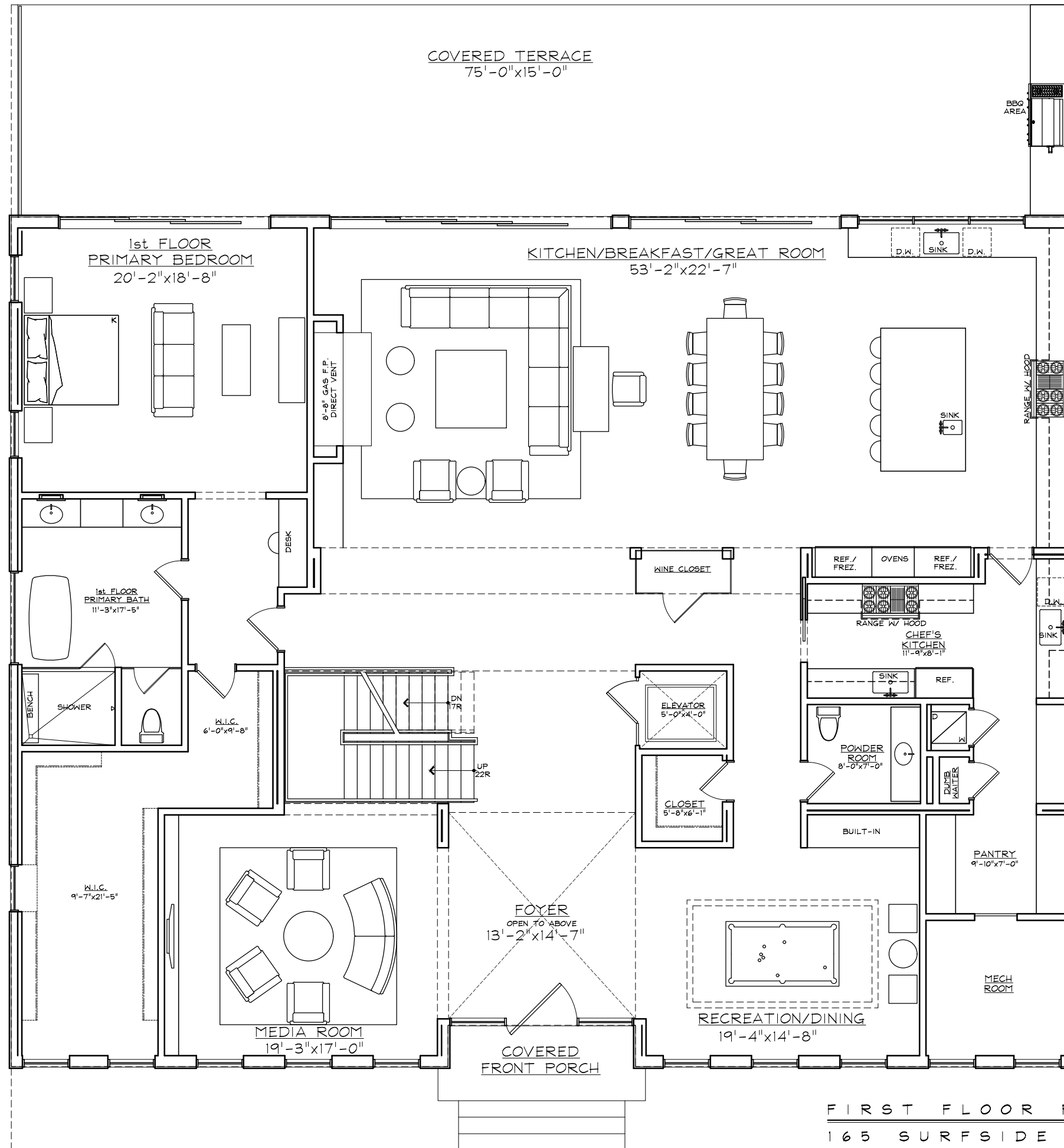








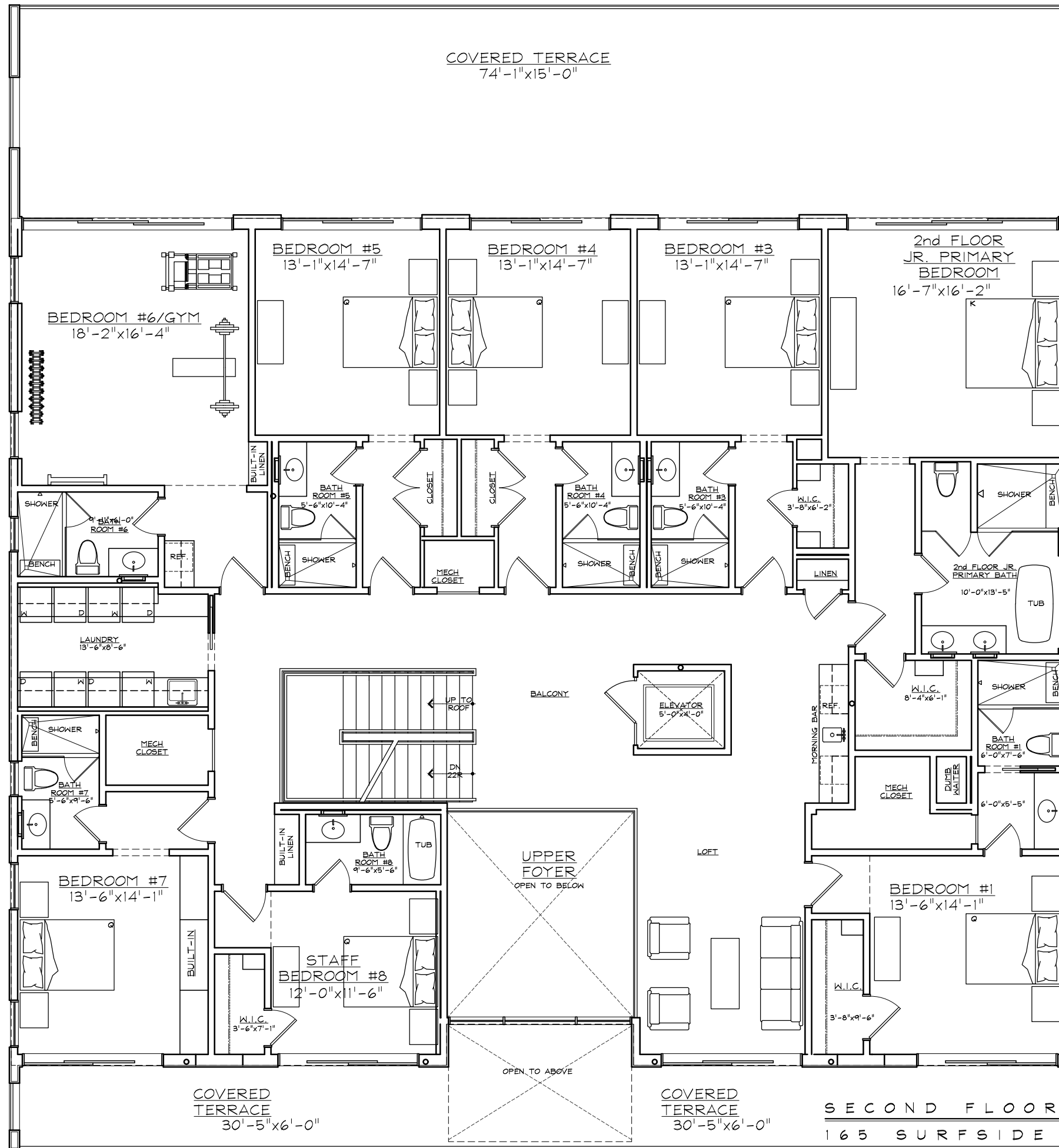




FIRST FLOOR PLAN (01-11-23)

165 SURFSIDE ROAD

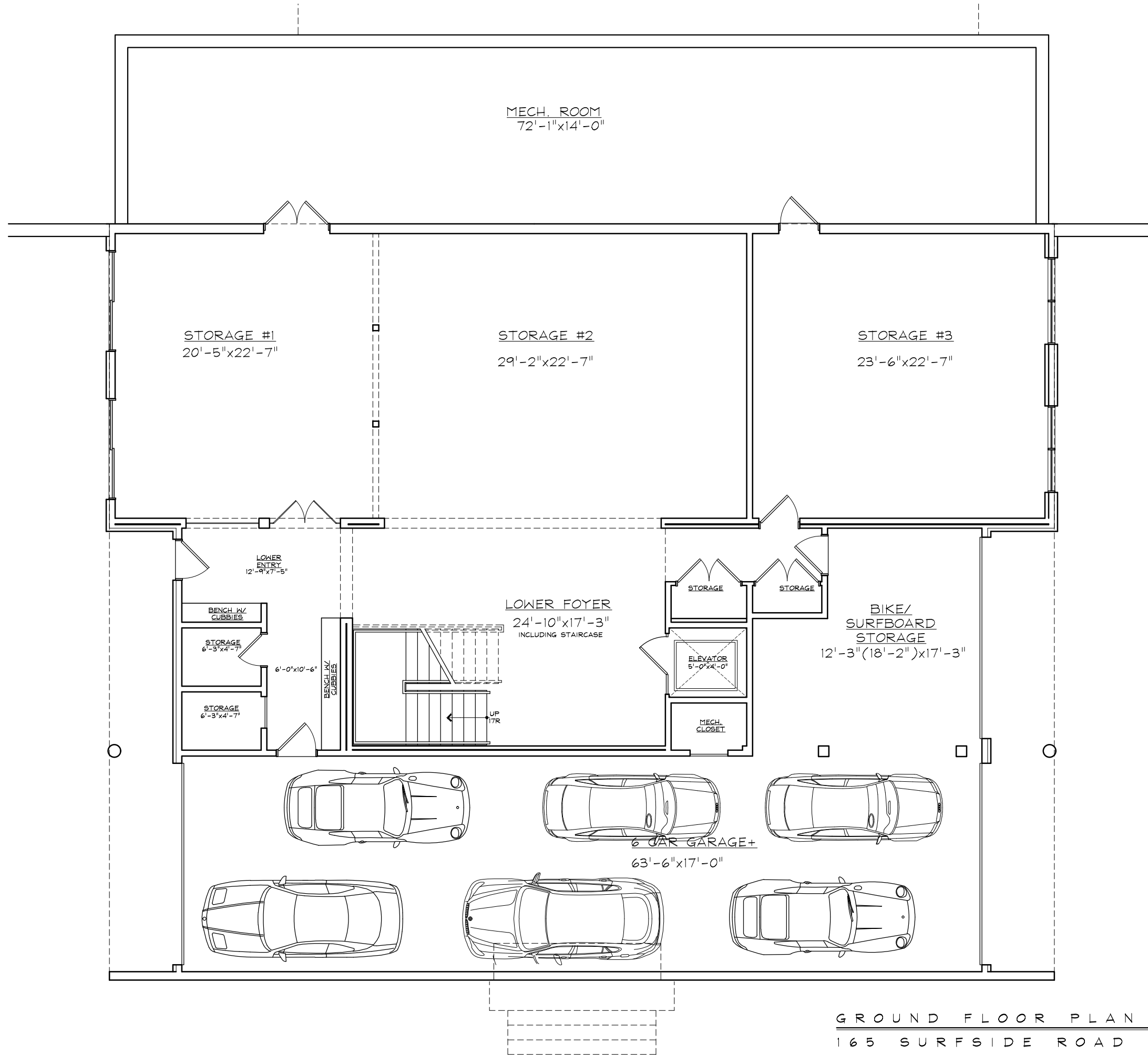
4,464 SQ. FT.
TOTAL: 8,600 SQ. FT.



SECOND FLOOR PLAN (01-11-23)

165 SURFSIDE ROAD

4,136 SQ. FT.



GROUND FLOOR PLAN (01-10-23)
 165 SURFSIDE ROAD



\$79.995M

165 Surfside Drive,
Bridgehampton

1.50 acre / 8600 SF+/-

8 bedrooms / 8 Full, 1 Half Bathrooms

Tax Map: 0900-117.000-0002-014.000

Taxes: \$80,885 / Year

For more pictures, video and info visit:

myhamptonhomes.com/911575

Corcoran WEB# 911575

Gary R. DePersia

Licensed Associate Real Estate Broker

m: 516.380.0538 | gdp@corcoran.com | myhamptonhomes.com