

New Water Mill 9,000 SF, 7 Bedroom 2 Acre Oasis Available End of August

390 Edge of Woods Road, Water Mill



Gary DePersia

Licensed Associate Real Estate Broker

m: 516.380.0538 | gdp@corcoran.com | myhamptonhomes.com

corcoran

corcoran group real estate



NEW WATER MILL 9000 SF, 7 BEDROOM 2 ACRE OASIS AVAILABLE END AUG

Water Mill. If you are looking for an end August rental, then get ready to feast your eyes on this masterpiece available to rent for the first time ever. Definitely not a run-of-the-mill residence, this gorgeous modern ode to contemporary living, just completed, is a sleek, modern oasis waiting for your summer adventures. Tucked away on 2 acres in a prime Water Mill north location on bucolic Edge of Woods Road with farm field views, this 7-bed, 9.5-bath residence incorporates 9,000 square feet of sheer luxury. Crafted from Douglas Fir and steel girders, every inch screams quality craftsmanship. Picture walls of glass, European tilt-and-turn windows, and views that will make your heart skip a beat from the dramatic 2 story great room with fireplace. Step outside and dive into your own private paradise - a 20'x50' heated Gunite saltwater pool with spa and pool bath, set within an expansive stone patio framed by a sea of verdant lawn. Just open the walls of glass with a flick of your wrist and let the indoor-outdoor vibes flow seamlessly. Inside, it is a symphony of elegance. Solid custom doors, white oak flooring, chic fireplaces - the works. The kitchen will make your daily living and weekend entertaining effortless with Quartz counter tops, professional appliances, and European custom cabinetry befitting any professional chef. The journey continues with first and second-floor primary suites, an additional first floor guest suite and 3 additional second floor bedrooms all with baths ensuite. The lower level is replete with a screening room, gym, and an additional bedroom suite perfect for staff or that weekend overflow. Located just minutes from Southampton Village and the ocean as well as only 12 minutes to your morning repast at Sag Town Coffee, this extraordinary resort like end of August option is the epitome of luxury living. So, what are you waiting for? Dive into the good life and call us today. **WEB# 886717**

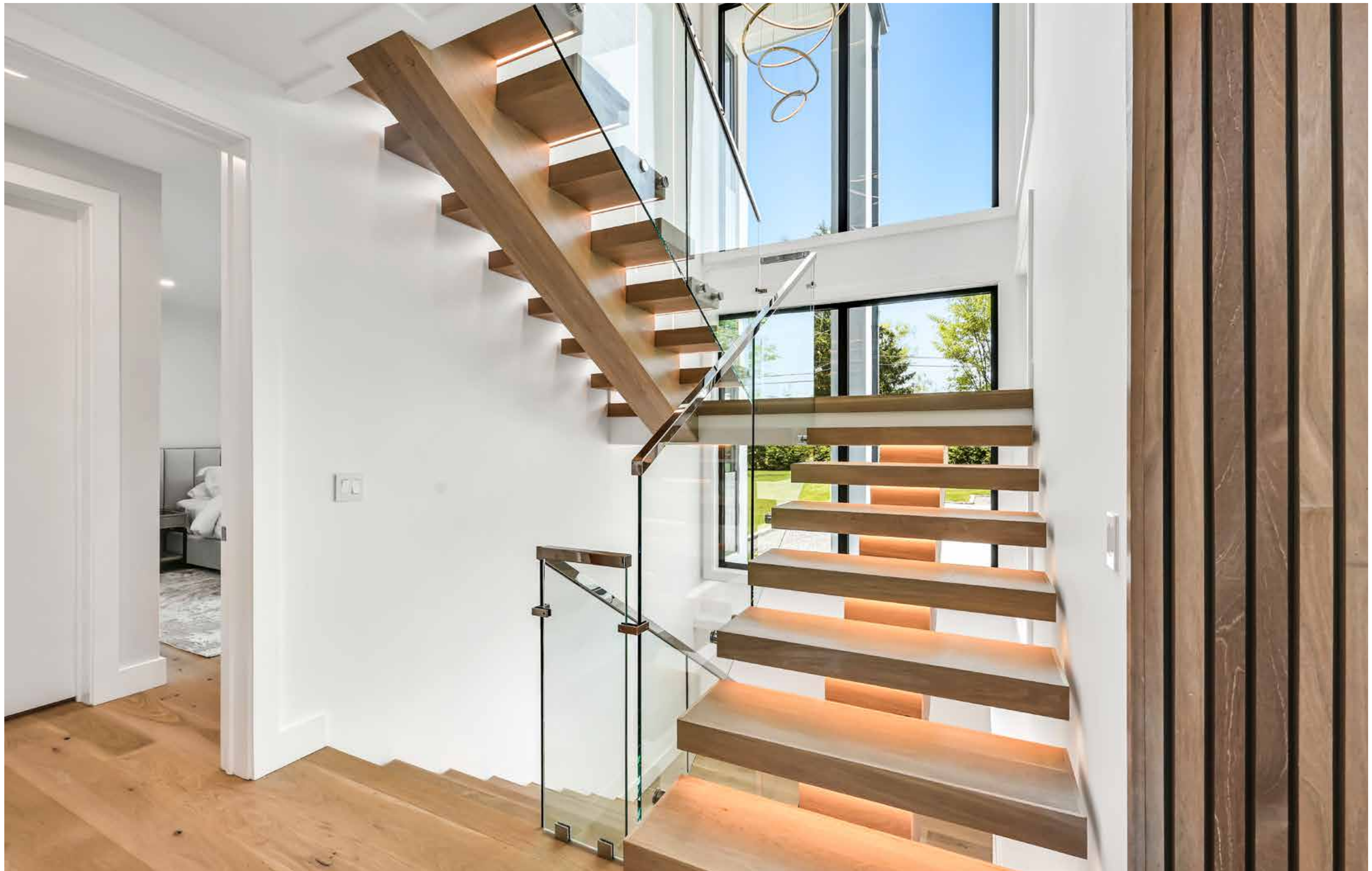










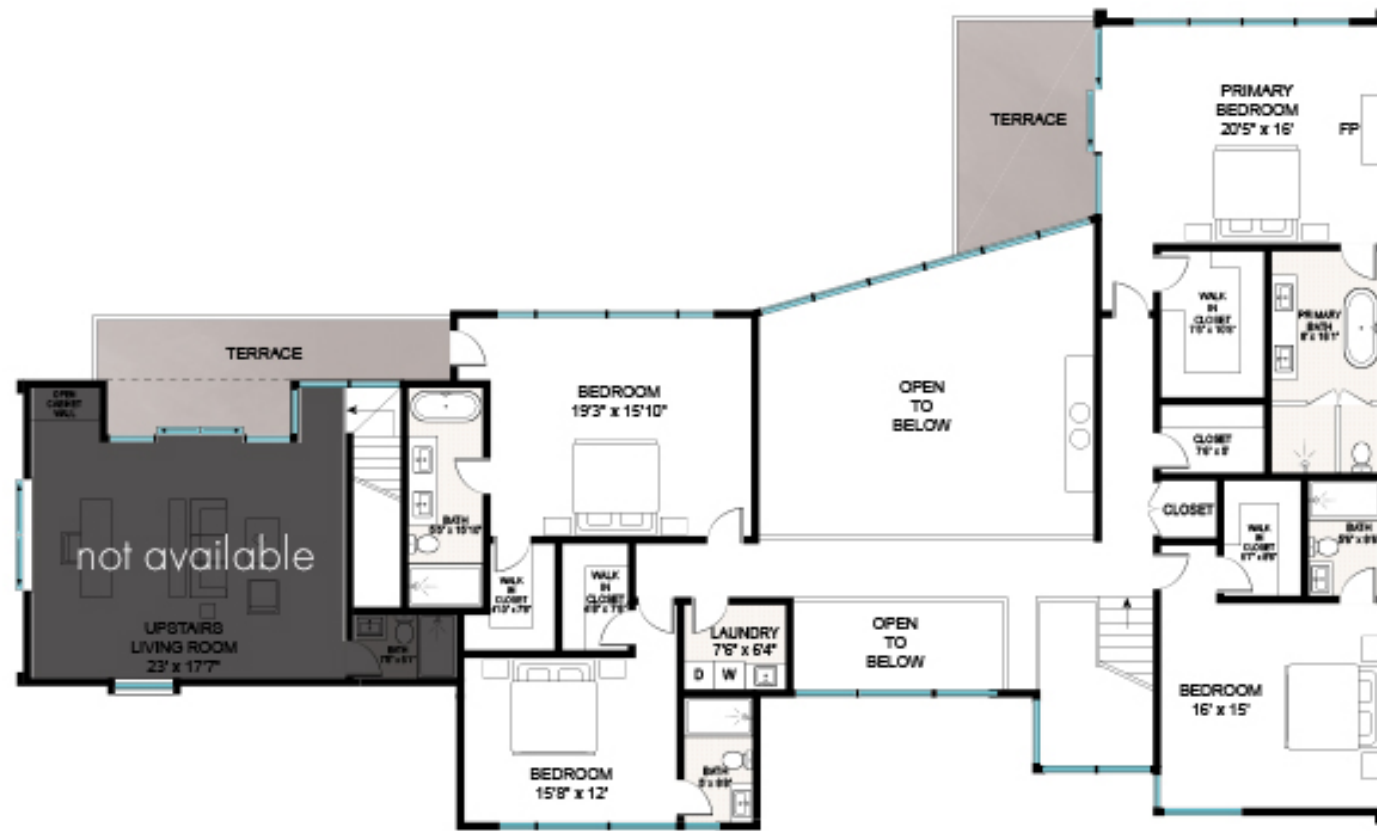








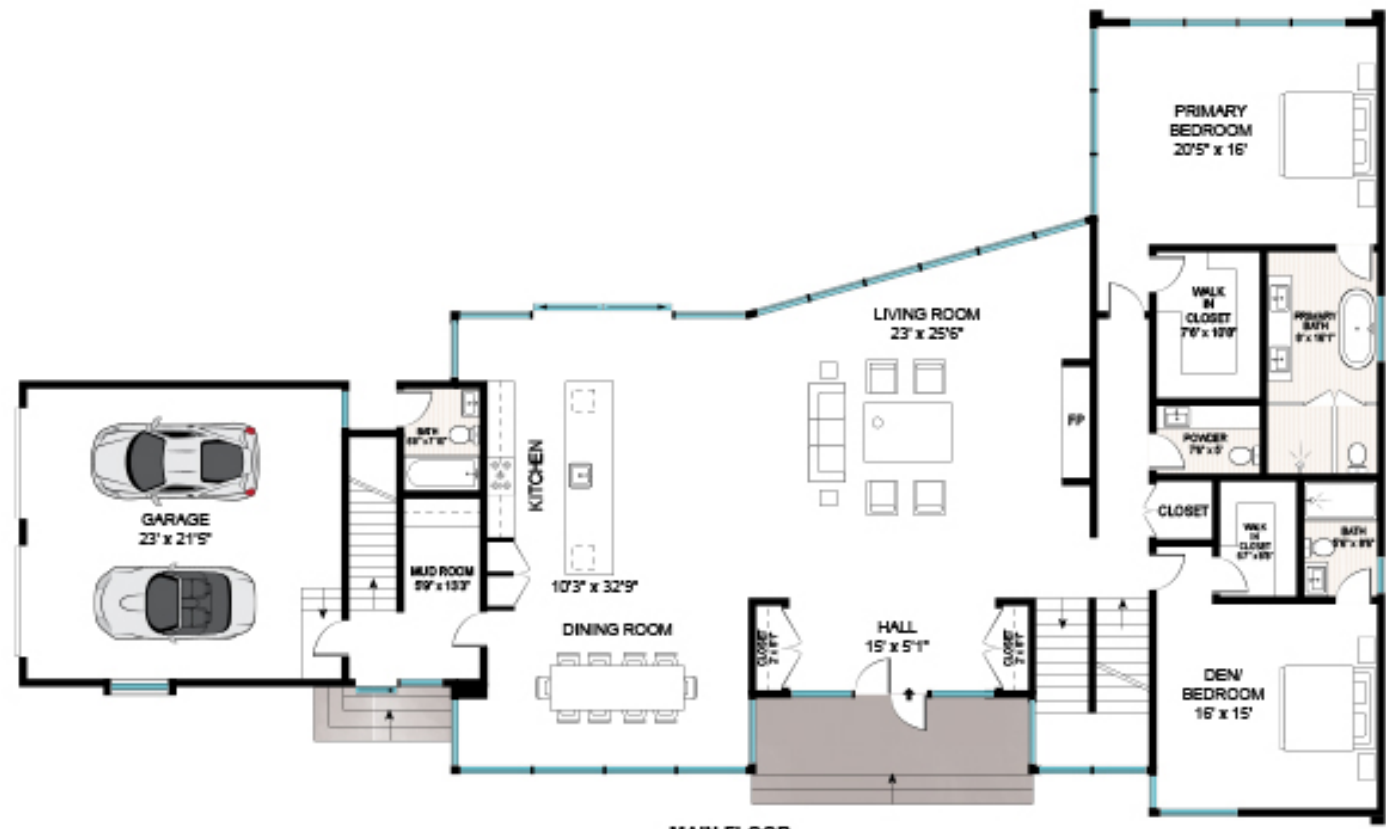




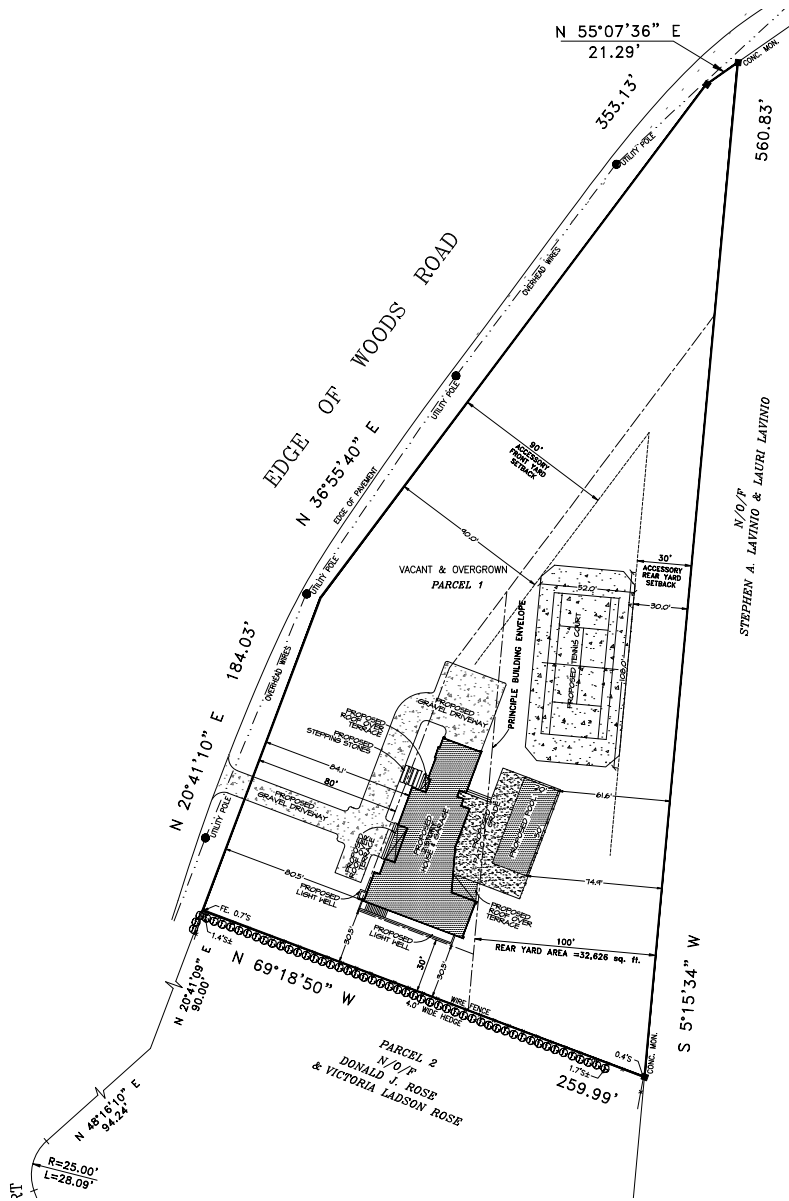
UPPER FLOOR
CEILING HEIGHT : 9'



BASEMENT
CEILING HEIGHT : 9'



MAIN FLOOR
CEILING HEIGHT : 9'



August - Labor Day : \$195K
 Any Two Weeks In August : \$95K
 390 Edge Of Woods Road, Water Mill

1.90 acre / 9,000 SF+/-
 9 bedrooms / 10 bathrooms

Tax Map: 0900-100.000-0002-005.005

For more pictures, video and info visit:
myhamptonhomes.com/909215
 Corcoran WEB#909215

Gary R. DePersia

Licensed Associate Real Estate Broker

m: 516.380.0538 | gdp@corcoran.com | myhamptonhomes.com