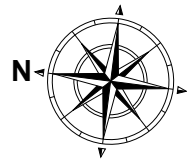


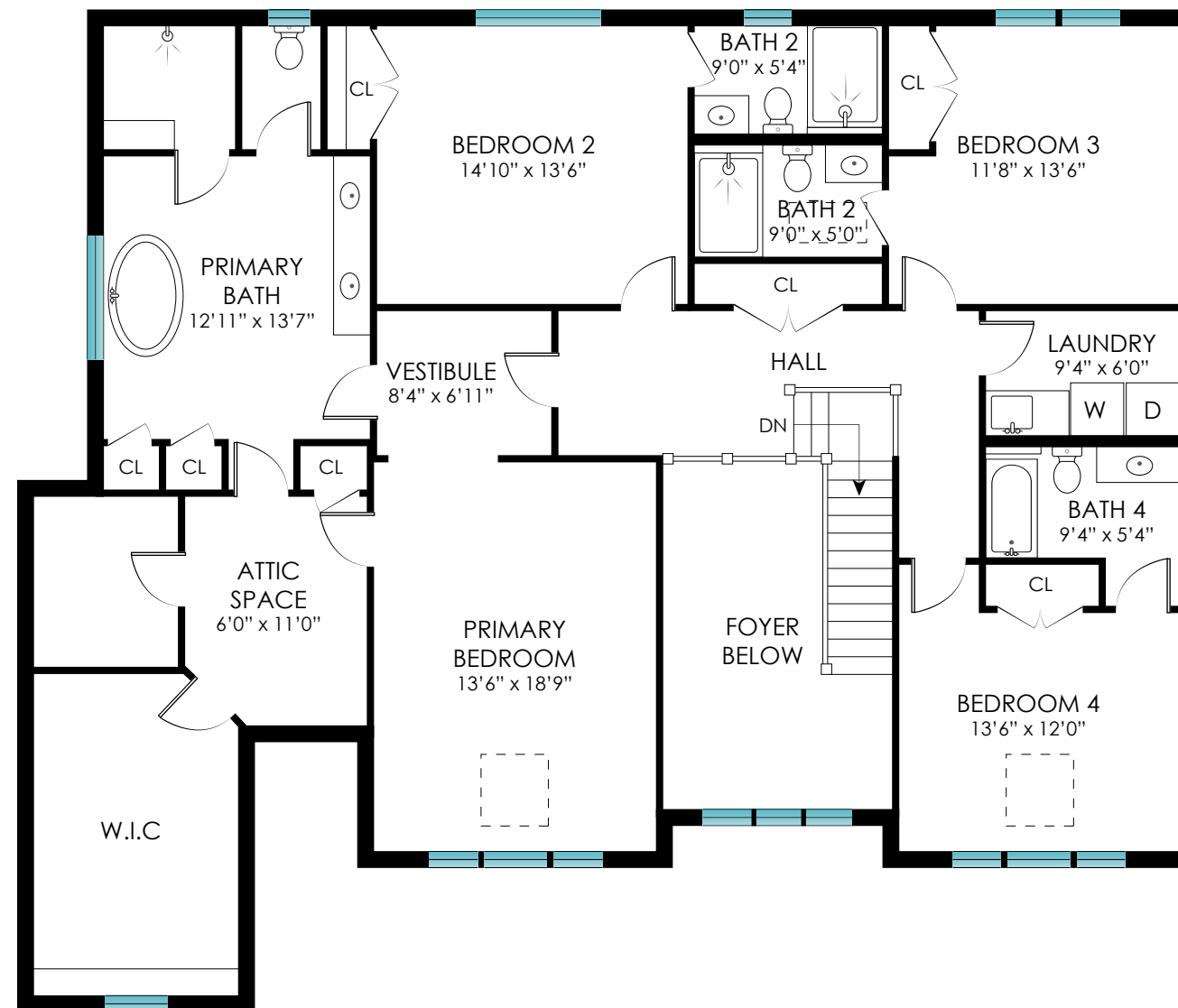
41 MIDDLE POND ROAD
SOUTHAMPTON, NY



1ST FLOOR - 2,079 SF
GARAGE - 635 SF



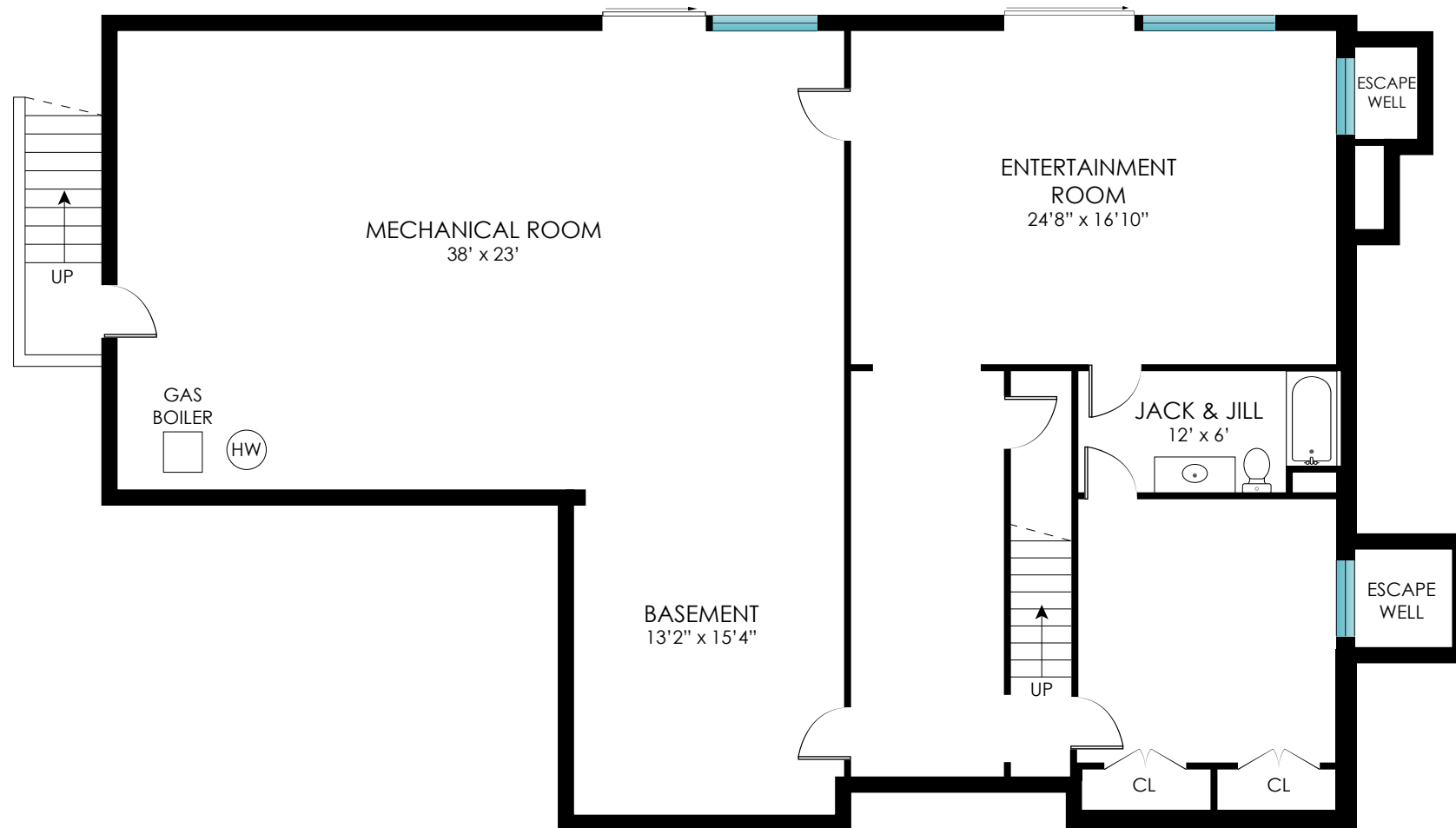
41 MIDDLE POND ROAD
SOUTHAMPTON, NY



SECOND FLOOR - 2,052 SF



41 MIDDLE POND ROAD
SOUTHAMPTON, NY



BASEMENT - 970 SF